

# Polysafe Verona PUR: *Pure Colours*



## PRODUCT SPECIFICATION

### Key Features

- > Enhanced sustainable slip resistant vinyl flooring
- > DCDC Dementia Design Accredited product
- > Contemporary decoration & matt surface finish
- > Pendulum test - 45+ (slider 96)
- > Polysafe PUR for superior cleaning benefits



Product Format	Standard	Result
Gauge	ISO 24346 (EN 428)	2.0mm
Total Weight	ISO 23997 (EN 430)	2600g/m <sup>2</sup>
Finish		PUR

Sheet Size	Size	Shades	Quantity per Box	Coverage per Box/Roll
Sheet	2m x 20m	16	-	40m <sup>2</sup>

Performance Requirements	Standard	Result
General Performance	EN 13845 ASTM F1303	Conforms Type II, Grade I, Class B Backing
Use Area	ISO 10874 (EN 685)	23, 34, 43
Enhanced Slip Resistance	EN 13845 RRL Pendulum Test DIN 51130 / DIN EN 16165 Ann. B Surface Roughness ASTM D2047 AS 4586 Appendix A AS 4586 Appendix D	ESf ≥45 (wet test - 4S Rubber / Slider 96) R11 Rz ≥20µm SCOF ≥0.8 P4 R11
Abrasion Resistance	EN 13845	50,000 cycles
Reaction to Fire	EN 13501-1 ASTM E648 Aus NCC Spec C1.10-3 CAN/ULC S-102.2 AS ISO 9239-1	Class Bfl-S1 Class 1 Complies FSV < 300; SDV < 500 >8.0kW/m <sup>2</sup>
Static Electrical Propensity	EN 1815	≤2.0kV Classified as 'antistatic'
Residual Indentation	ASTM F970 (Modified)	≤0.005" (750psi)
Flexibility	ASTM F137	1.5" Pass
Resistance to Light	ASTM F1515	ΔE ≤ 8.0 - Meets
Resistance to Heat	ASTM F1514	ΔE ≤ 8.0 - Meets

## Sustainability

Sustainability	Standard	Result
BRE Green Guide		A+ ENP 472
Singapore Green Building Product (SGBP)		Excellent
Generic EN 15804 EPD		Available
Recyclable		100%
Recycled Content		Contains recycled material
REACH		Compliant
Indoor Air Comfort Gold		Eurofins certified product
FloorScore		Certified
Finnish M1 Classification		Certified
AgBB/ABG		Pass
Responsible Sourcing	BES 6001	Excellent

## Maintenance Performance

Maintenance Performance	Standard	Result
Resistance to Chemicals	ISO 26987 (EN 423) ASTM F925	Good resistance Good resistance
Alco Hand Gels	Compatible for use with most commonly used alco-based hand gels	
Steam Cleaning	Suitable for steam cleaning on a periodic basis	

All Polyflor commercial sheet vinyl ranges provide a continuous, impervious and hygienic flooring solution which can be confidently cleaned in accordance with recommended maintenance procedures and approved maintenance products. The implementation of an effective cleaning regime is the most important defence against infection.

## Hygiene

Hygiene	Standard	Result
Bacterial Resistance	ISO 846 Part C	Does not favour growth



BS EN 14041



EN 14041

### Polyflor Ltd. Head Office

PO Box 3, Radcliffe New Road, Whitefield, Manchester, M45 7NR • Tel: +44 (0) 161 767 1111 • Email: [info@polyflor.com](mailto:info@polyflor.com) • [www.polyflor.com](http://www.polyflor.com)

© At the time of writing and publication of sheet, all the information is specified correctly. The company reserves the right to change the specifications of this product at any time without prior notice to third parties.

V2

# Polysafe Verona PUR: *Pure Colours*



## RANGE SHADES



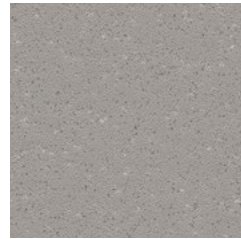
**Rock Salt 5231** w/r 9858  
NCS S 3000-N LRV 43



**Vanilla 5221** w/r 5221  
NCS S 1502-Y LRV 63



**Mocha 5222** w/r 5212  
NCS S 3005-Y20R LRV 43



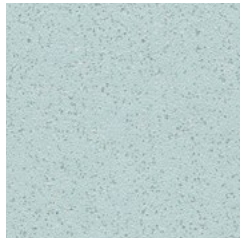
**Monsoon 5226** w/r 5764  
NCS S 4500-N LRV 25



**Glacier 5225** w/r 5202  
NCS S 2502-B LRV 47



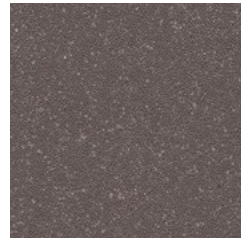
**Pebble Shore 5233** w/r 5233  
NCS S 5500-N LRV 21



**Duck Egg 5235** w/r 5209  
NCS S 2010-B30G LRV 50



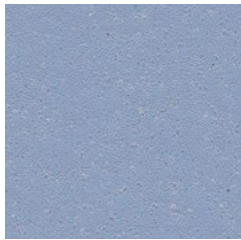
**Cappuccino 5224** w/r 5213  
NCS S 4010-Y50R LRV 33



**Americano 5234** w/r 5204  
NCS S 6502-R LRV 12



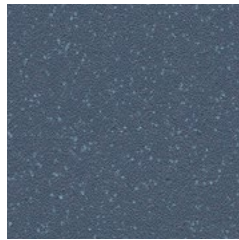
**Sea Breeze 5227** w/r 5205  
NCS S 2020-B LRV 44



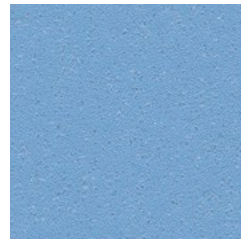
**Pacific Blue 5228** w/r 5208  
NCS S 3020-R90B LRV 29



**Rich Black 5236** w/r 8640  
NCS S 8000-N LRV 7



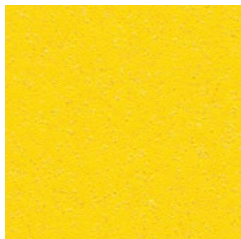
**Midnight Blue 5238** w/r 5207  
NCS S 6010-R90B LRV 12



**Azure 5229** w/r 5206  
NCS S 3030-R90B LRV 31



**Neptune 5239** w/r 5239  
NCS S 5040-B20G LRV 12



**Lemon Drizzle 5241** w/r 9947  
NCS S 1070-Y LRV 54

w/r - Weld Rod

LRV - Light Reflectance Value

NCS - Natural Colour System

### Polyflor Ltd. Head Office

PO Box 3, Radcliffe New Road, Whitefield, Manchester, M45 7NR • Tel: +44 (0) 161 767 1111 • Email: info@polyflor.com • www.polyflor.com

© At the time of writing and publication of sheet, all the information is specified correctly. The company reserves the right to change the specifications of this product at any time without prior notice to third parties.