

Expona Flow PUR

PRODUCT SPECIFICATION

Key Features

- > Contemporary wood, stone & abstract designs
- > Durable vinyl sheet format
- > Low VOC emissions
- > Low cost, polish-free maintenance
- > Heavy commercial installations



Product Format	Standard	Result
Gauge	ISO 24346 (EN 428)	2.0mm
Wear Layer	ISO 24340 (EN 429)	0.70mm
Total Weight	ISO 23997 (EN 430)	2660g/m ²
Finish		PUR

Sheet Size	Size	Shades	Quantity per Box	Coverage per Box/Roll
Sheet	2m x 20m	50	-	40m ²

Performance Requirements	Standard	Result
General Performance	ISO 10582 (EN 649) ASTM F1303	Conforms Type I, Grade I, Class B Backing
Use Area	ISO 10874 (EN 685)	23, 34, 43
Slip Resistance	EN 13893 DIN 51130 / DIN EN 16165 Ann. B AS 4586 ASTM D2047	Class DS R10 R10 SCOF ≥0.5
Binder Content	ISO 10582	Type I
Abrasion Resistance	EN 649	Group T
Reaction to Fire	EN 13501-1 ASTM E648 CAN/ULC S-102.2	Class Bfl-S1 Class 1 FSV < 300; SDV < 500
Static Electrical Propensity	EN 1815	≤2.0kV Classified as 'antistatic'
Residual Indentation	ASTM F1914 ASTM F970 (Modified) ISO 24343-1	<0.005" <0.005" (750psi) ≤0.10mm
Castor Chair (continuous use)	ISO 4918 (EN 425)	Suitable
Dimensional Stability	ISO 23999 (EN 434)	≤0.40%
Flexibility	ISO 24344 (EN 435) ASTM F137	(Method A) Pass 20mm ø 0.25" Pass
Underfloor Heating		Suitable, max 27°C
Light Fastness	ISO 105-B02 (Method 3)	≥6

Resistance to Light	ASTM F1515	$\Delta E \leq 8.0$ - Meets
Resistance to Heat	ASTM F1514	$\Delta E \leq 8.0$ - Meets

Sustainability

	Standard	Result
BRE Green Guide		A+ ENP 415
GreenTag	LCA Rate Gold Plus	GreenRate level A
Generic EN 15804 EPD		Available
Recyclable		100%
Recycled Content		10%
REACH		Compliant
Indoor Air Comfort Gold		Eurofins certified product
FloorScore		Certified
Finnish M1 Classification		Certified
AgBB/ABG		Pass
Responsible Sourcing	BES 6001	Excellent

Acoustic Performance

	Standard	Result
Impact Sound Reduction	ISO 10140-3	8dB

Maintenance Performance

	Standard	Result
Resistance to Chemicals	ISO 26987 (EN 423) ASTM F925	Good resistance Good resistance

All Polyflor commercial sheet vinyl ranges provide a continuous, impervious and hygienic flooring solution which can be confidently cleaned in accordance with recommended maintenance procedures and approved maintenance products. The implementation of an effective cleaning regime is the most important defence against infection.

Hygiene

	Standard	Result
Bacterial Resistance	ISO 846 Part C	Does not favour growth



Polyflor Ltd. Head Office

PO Box 3, Radcliffe New Road, Whitefield, Manchester, M45 7NR • Tel: +44 (0) 161 767 1111 • Email: info@polyflor.com • www.polyflor.com

© At the time of writing and publication of sheet, all the information is specified correctly. The company reserves the right to change the specifications of this product at any time without prior notice to third parties.

Expona Flow PUR



RANGE SHADES



White Pine 9834
plank size in sheet: 166 x 1500mm
w/r 9834 LRV 57



Painted Chevron 9828
plank size in sheet: 120 x 700mm
w/r 9828 LRV 43



Sun Bleached Oak 9825
plank size in sheet: 200 x 1500mm
w/r 9825 LRV 31



Silver Oak 9826
plank size in sheet: 200 x 1500mm
w/r 9826 LRV 28



Grey Weathered Chevron 9829
plank size in sheet: 120 x 700mm
w/r 9829 LRV 26



Classic Limed Ash 9833
plank size in sheet: 166 x 1500mm
w/r 9833 LRV 49



Warm Limed Ash 9832
plank size in sheet: 166 x 1500mm
w/r 9832 LRV 34



Blond Pine 9839
plank size in sheet: 166 x 1500mm
w/r 9839 LRV 37



Blond Oak 9820
plank size in sheet: 167 x 1500mm
w/r 9820 LRV 28



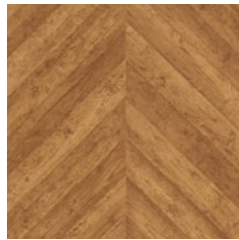
Roasted Limed Ash 9831
plank size in sheet: 166 x 1500mm
w/r 9831 LRV 27



English Oak 9823
plank size in sheet: 200 x 1500mm
w/r 9823 LRV 24



Golden Pine 9838
plank size in sheet: 166 x 1500mm
w/r 9838 LRV 25



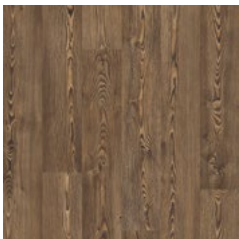
Reclaimed Chevron 9830
plank size in sheet: 120 x 700mm
w/r 9830 LRV 17



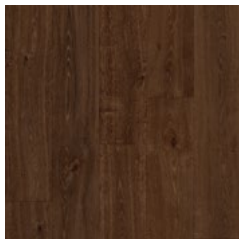
Honey Oak 9821
plank size in sheet: 167 x 1500mm
w/r 9821 LRV 22



Toasted Oak 9822
plank size in sheet: 167 x 1500mm
w/r 9822 LRV 18



Bronzed Pine 9835
plank size in sheet: 166 x 1500mm
w/r 9835 LRV 14



Aged Oak 9824
plank size in sheet: 200 x 1500mm
w/r 9824 LRV 8



Silvered Pine 9836
plank size in sheet: 166 x 1500mm
w/r 9836 LRV 17



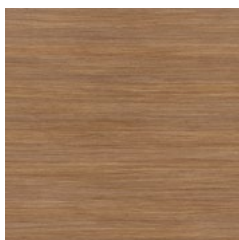
Smoked Oak 9827
plank size in sheet: 200 x 1500mm
w/r 9827 LRV 11



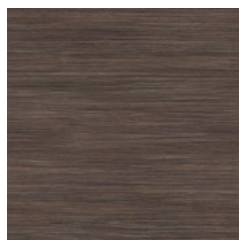
Charcoal Pine 9837
plank size in sheet: 166 x 1500mm
w/r 9837 LRV 13



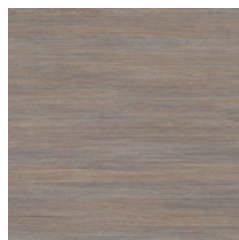
Honey Beige 9869
NCS S 3005-Y50R
w/r 9869 LRV 29



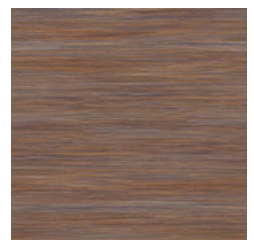
Auburn 9863
NCS S 5020-Y30R
w/r 9863 LRV 17



Espresso 9867
NCS S 7005-Y80R
w/r 9867 LRV 10



Autumn Rain 9864
NCS S 5005-Y80R
w/r 9864 LRV 24



Firelight 9868
NCS S 5020-Y40R
w/r 9868 LRV 16

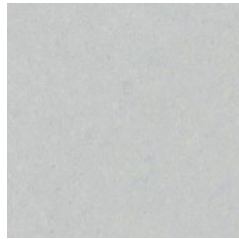
Expona Flow PUR



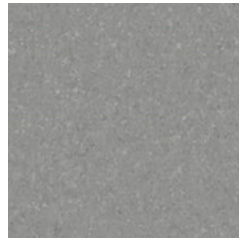
Night Sky 9865
NCS S 7000-N
w/r 9865 LRV 13



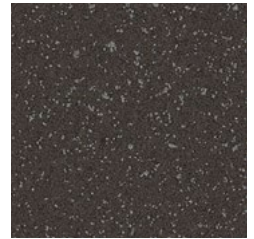
Raven 9866
NCS S 7502-R
w/r 9866 LRV 12



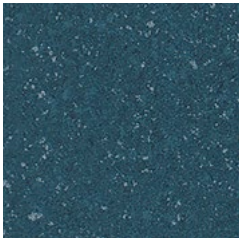
Luna 9844
NCS S 1502-B
w/r 9844 LRV 48



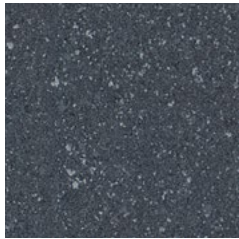
Storm 9845
NCS S 3502-B
w/r 9845 LRV 26



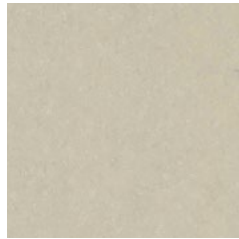
Jet 9842
NCS S 8000-N
w/r 9842 LRV 8



Steel Blue 9852
NCS S 6020-B10G
w/r 9852 LRV 10



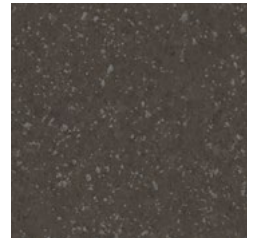
Midnight 9854
NCS S 7005-R80B
w/r 9854 LRV 10



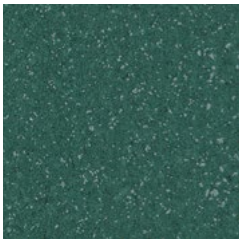
Oatmeal 9840
NCS S 2005-G90Y
w/r 9840 LRV 43



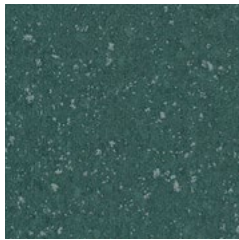
Moleskin 9841
NCS S 3005-Y20R
w/r 9841 LRV 28



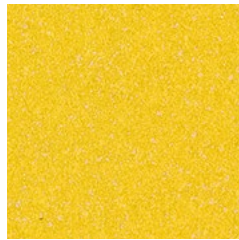
Taupe 9843
NCS S 7502-Y
w/r 9843 LRV 10



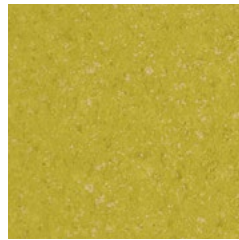
Teal 9851
NCS S 6020-B70G
w/r 9851 LRV 11



Woodland 9853
NCS S 6020-B50G
w/r 9853 LRV 11



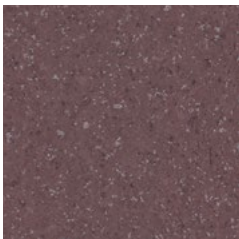
Flaxen 9849
NCS S 0560-Y
w/r 9849 LRV 44



Meadow 9850
NCS S 2050-G90Y
w/r 9850 LRV 32



Burnt Orange 9848
NCS S 3040-Y40R
w/r 9848 LRV 24



Mulberry 9846
NCS S 6010-R30B
w/r 9846 LRV 13



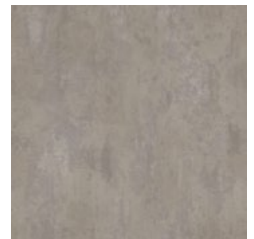
Plum 9847
NCS S 6020-R10B
w/r 9847 LRV 9



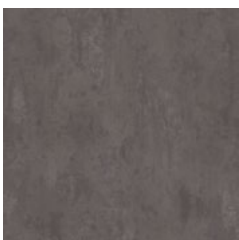
Light Grey Concrete 9858
NCS S 3000-N
w/r 9858 LRV 40



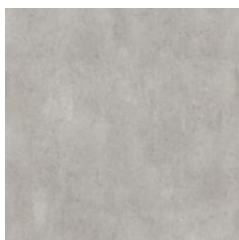
Cool Concrete 9856
NCS S 4500-N
w/r 9856 LRV 22



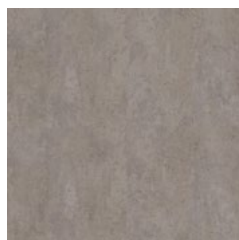
Warm Concrete 9855
NCS S 3502-R
w/r 9855 LRV 25



Dark Grey Concrete 9857
NCS S 6502-R
w/r 9857 LRV 13



Light Industrial Concrete 9860
NCS S 2500-N
w/r 9860 LRV 35



Dark Industrial Concrete 9859
NCS S 4502-R
w/r 9859 LRV 24



Copper Ornamental 9861
NCS S 5502-R
w/r 9861 LRV 19



Onyx Ornamental 9862
NCS S 7000-N
w/r 9862 LRV 11

w/r - Weld Rod

LRV - Light Reflectance Value

NCS - Natural Colour System

Polyflor Ltd. Head Office

PO Box 3, Radcliffe New Road, Whitefield, Manchester, M45 7NR • Tel: +44 (0) 161 767 1111 • Email: info@polyflor.com • www.polyflor.com

© At the time of writing and publication of sheet, all the information is specified correctly. The company reserves the right to change the specifications of this product at any time without prior notice to third parties.