

Expona Control

PRODUCT SPECIFICATION

Key Features

- > Innovative LVT safety flooring in wood planks & stone tiles
- > Pendulum test - 36+ (slider 96)
- > Sustainable slip resistance
- > Patent protected design
- > For use in heavy commercial areas such as restaurants and supermarkets



| Product Format | Standard | Result |
|----------------|--------------------|----------------------|
| Gauge | ISO 24346 (EN 428) | 2.5mm |
| Wear Layer | ISO 24340 (EN 429) | 0.70mm |
| Total Weight | ISO 23997 (EN 430) | 4290g/m ² |
| Finish | | PUR |

| Plank & Tile Sizes | Size | Shades | Quantity per Box | Coverage per Box/Roll |
|--------------------|-------------------|--------|------------------|-----------------------|
| Plank | 152.4mm x 914.4mm | 7 | 24 | 3.34m ² |
| Tile | 304.8mm x 609.6mm | 2 | 18 | 3.34m ² |
| | 457.2mm x 457.2mm | 5 | 16 | 3.34m ² |

| Performance Requirements | Standard | Result |
|-------------------------------|---|---|
| General Performance | ISO 10582 (EN 649) | Conforms |
| Use Area | ISO 10874 (EN 685) | 23, 34, 43 |
| Enhanced Slip Resistance | EN 13845 RRL Pendulum Test DIN 51130 / DIN EN 16165 Ann. B Surface Roughness ASTM D2047 | Esf ≥36 (wet test - 4S Rubber/Slider 96) R10 Rz >20µm SCOF ≥0.8 |
| Binder Content | EN ISO 10582 | Type I |
| Abrasion Resistance | EN 13845 | 50,000 cycles |
| Reaction to Fire | EN 13501-1 ASTM E648 CAN/ULC S102.2 AS ISO 9239-1 | Class Bfl-S1 Class 1 FSV < 300; SDV < 500 >8.0 kW/m ² |
| Static Electrical Propensity | EN 1815 | ≤2.0kV Classified as 'antistatic' |
| Residual Indentation | ISO 24343-1 | ≤0.05mm* |
| Dimensional Stability | ISO 23999 (EN 434) | ≤0.10% max |
| Underfloor Heating | | Suitable, max 27°C |
| Light Fastness | ISO 105-B02 (Method 3) | ≥6 |
| Castor Chair (continuous use) | ISO 4918 (EN 425) | Suitable |

*Average test value from current production.

| Sustainability | Standard | Result |
|---------------------------|---------------------|-------------------------------|
| BRE Green Guide | | A+ ENP 429 |
| Generic EN 15804 EPD | | Available |
| Recyclable | | 100% |
| Recycled Content | | Up to 40% |
| REACH | | Compliant |
| Indoor Air Comfort Gold | | Eurofins certified product |
| FloorScore | | Certified |
| Finnish M1 Classification | | Certified |
| AgBB/ABG | | Pass |
| Responsible Sourcing | BES 6001 SA 8000 | Very Good Approved factory |

| Acoustic Performance | Standard | Result |
|------------------------|-------------|--------|
| Impact Sound Reduction | ISO 10140-3 | 2dB |

| Maintenance Performance | Standard | Result |
|-------------------------|--------------------|-----------------|
| Resistance to Chemicals | ISO 26987 (EN 423) | Good resistance |

Regular light maintenance is more cost-effective than periodic heavy maintenance and more beneficial to the floor covering.



Polyflor Ltd. Head Office

PO Box 3, Radcliffe New Road, Whitefield, Manchester, M45 7NR • Tel: +44 (0) 161 767 1111 • Email: info@polyflor.com • www.polyflor.com

© At the time of writing and publication of sheet, all the information is specified correctly. The company reserves the right to change the specifications of this product at any time without prior notice to third parties.

Expona Control

RANGE SHADES

152.4mm x 914.4mm

6" x 36"



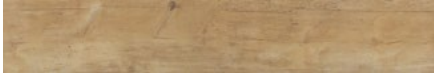
American Oak **6500**

LRV 31



White Oak **6505**

LRV 48



Blond Country Plank **6501**

LRV 28



Light Elm **6506**

LRV 23



Nut Tree **6502**

LRV 30



Weathered Country Plank **6504**

LRV 11

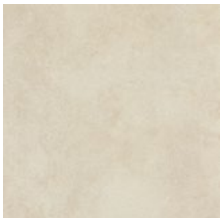


Classic Oak **6503**

LRV 23

457.2mm x 457.2mm

18" x 18"



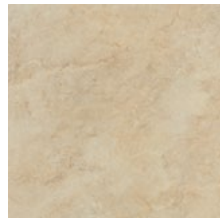
Portland Stone **7500**

LRV 51



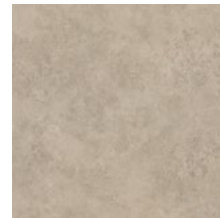
Classic Limestone **7501**

LRV 47



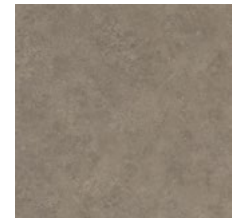
Classic Yorkstone **7502**

LRV 44



Smoked Limestone **7503**

LRV 37

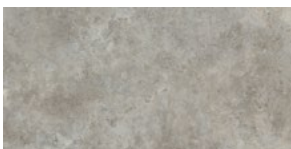


Warm Grey Concrete **7504**

LRV 21

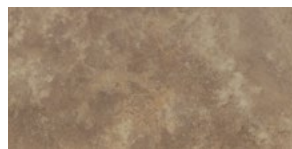
304.8mm x 609.6mm

12" x 24"



Roman Limestone **7506**

LRV 33



Cambrian Stone **7507**

LRV 24

LRV - Light Reflectance Value

Polyflor Ltd. Head Office

PO Box 3, Radcliffe New Road, Whitefield, Manchester, M45 7NR • Tel: +44 (0) 161 767 1111 • Email: info@polyflor.com • www.polyflor.com

© At the time of writing and publication of sheet, all the information is specified correctly. The company reserves the right to change the specifications of this product at any time without prior notice to third parties.

V1