



mat.works
Entrance Solutions

TREADSURE 205

part of the group

paragon
CARPET TILES

Mat.Works Entrance Solutions is a Division of National Floorcoverings Ltd,
the UK's leading manufacturer of commercial floor coverings.

TREADSURE 205



Mat.Works Entrance Solutions' latest innovation in modular matting

Treadsure 205 by Mat.Works Entrance Solutions is a major advancement in the world of modular matting systems. The system has been designed not just for extremely heavy footfall but also with wheeled traffic entrances in supermarkets, retail, education and healthcare in mind - providing an alternative to aluminium matting systems.

Similar to its sister product, the popular Treadloc 25, Treadsure 205 is manufactured from nitrile rubber to provide optimum performance and has a host of key features that set the product apart from any other standard modular matting system.

One of these is its sheer durability, which is provided by the product size and weight. Treadsure 205 has dimensions of 205cm x 50cm, and offers a weight of 20kg per sqm (14kg per sqm for the 12mm version), which ensures it is one of the heaviest modular matting solutions available on the market.

The sturdiness of Treadsure 205 provides significant durability when installed. Similar to Treadloc 25, Treadsure 205 has been designed to withstand heavy footfall and wheeled traffic. It will not expand, contract, fade or become brittle, nor will it bend or buckle under pressure making it an ideal heavy contract solution for entrance areas in every sector.

The weight ensures, when installed correctly, it will not move or slip in the matwell. It also makes installation easier, as there are no click or interlocking systems. No specialist equipment is required either, as Treadsure 205 can simply be cut to size on-site using a Stanley knife.

If more than one system is needed, the modules are simply be placed next to each other - significantly reducing any potential installation times.

Treadsure 205 is manufactured using the same special formulated copper impregnated nitrile rubber compound as Treadloc 25, which has proven anti-microbial properties, combating the spread of hospital-acquired infections such as MRSA.

The safety of Treadsure 205 is also enhanced through its Cfl-s2 fire rating (tested to BS EN 14041:2004), and its proven ability to deliver a very low risk for slips in both wet and dry conditions (TRRL Pendulum test in accordance with BS 7976-2:2000 and A1:2013).

There are a host of carpet inserts available with Treadsure 205. Choose from the company's Workspace Entrance, MW Maxim, MW Rib HD or Premier range to create a complete system.

Alternatively, for a truly unique and individual entrance system, there is also the option to choose from more than one colour or range in the same module, for example, using Workspace Entrance Vulcan and MW Rib HD Light Grey in the same system. T-Bars are also available if there is the requirement to visibly show the different modules in the matwell.

Wherever the installation and whatever the setting, the Mat.Works Entrance Solutions team work closely with clients to understand their requirements, providing expert advice throughout every step from specification and product selection, right through to installation.

To revolutionise your entrance area, choose Treadsure 205.

TREADSURE 205



Treadsure 205 provides a flammability rating of Cfl-s2 (BS EN 14041:2004)



Perfect for Healthcare

The nitrile rubber in Treadsure 205 is now manufactured with copper compounds, a material that has been proven to have anti-microbial properties, combating the spread of hospital-acquired infections, including MRSA.

The product has been tested to ISO 22196, which specifies a method of evaluating the antibacterial activity of antibacterial-treated plastics, and other non-porous surfaces of products.

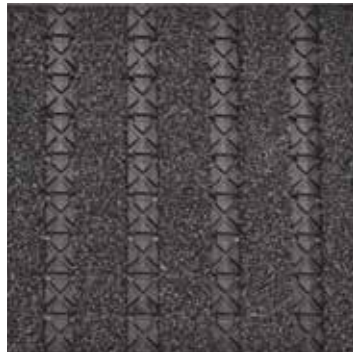
The results showed that the copper in the Treadsure 205 killed 99.29% of MRSA Bacterium.



When examined under the Coefficient of Friction test (TRRL Pendulum test in accordance with BS 7976-2:2000+A1:2013), Treadsure 205 has been proven to provide very low risk for slips in both dry and wet conditions.



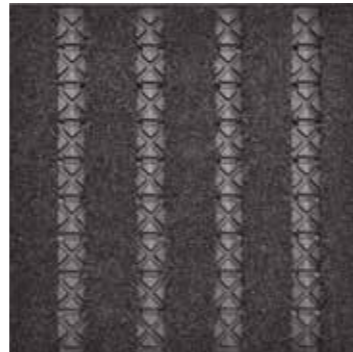
Providing true flexibility



Workspace Entrance
Victor Inserts



Workspace Entrance
Viscount Inserts



Workspace Entrance
Vulcan Inserts



Workspace Entrance
Vixen Inserts



Premier
Charcoal Inserts



Premier
Dark Blue Inserts



Premier
Mercury Inserts



MW Maxim Yellow and
MW Maxim Anthracite
(Safety Colour Inserts)

Looking for something different?

Mat.Works Entrance Solutions provides a host of product inserts in a variety of colours to suit any requirement.



Module Size	205cm x 50cm x 12mm / 18mm
Seamless Installation	Seamlessly place two or more modules next to each other without the need for any locking mechanism
Composition	Nitrile rubber composition
Performance	Nitrile rubber is resistant to oil, grease and fuel
Wear Classification	Heavy Contract Class 33
Weight	14,000gsm (12mm), 20,000gsm (18m)
Fire Rating	Cfl-s2
Anti-Microbial	Tested to ISO 22196
Anti-Slip	TRRL Pendulum test - very low risk for slips in both dry and wet conditions

KEY FEATURES

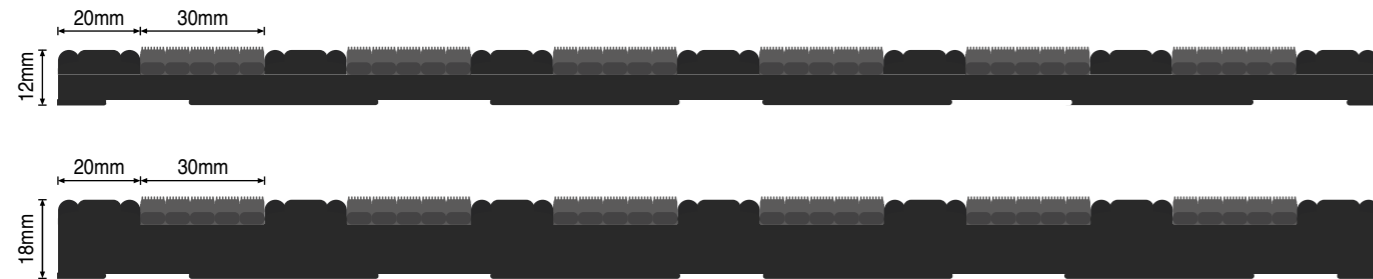
- Simple to install in most matwells
- Weight cannot be rivalled in the current market
- Will not buckle or bounce under pressure, making it suitable for wheel and trolley traffic
- Can be fitted with a host of carpet inserts to match any style
- Cost-effective solution when compared to aluminium products

Choose your system

How to choose your Treadsure 205 system:

Stage 1:

Start with your Treadsure 205 base, and select either 12mm or 18mm.



Stage 2:

Choice of a host of insert options available, with Mat.Works Entrance Solutions' three most popular ranges listed below.

Workspace Entrance

Style Tufted Cut Pile with integral scraper system
Fibre Construction 100% solution dyed nylon

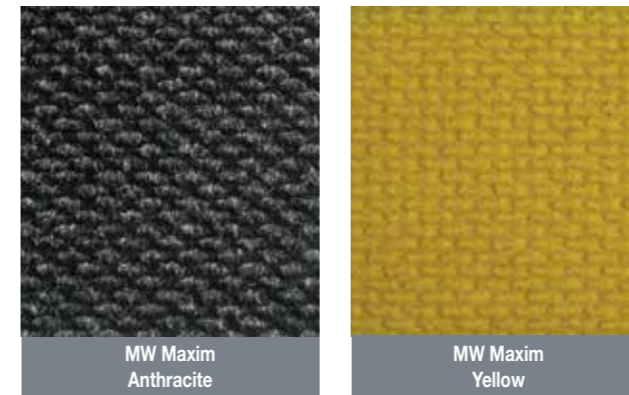


Choose your system

MW Maxim

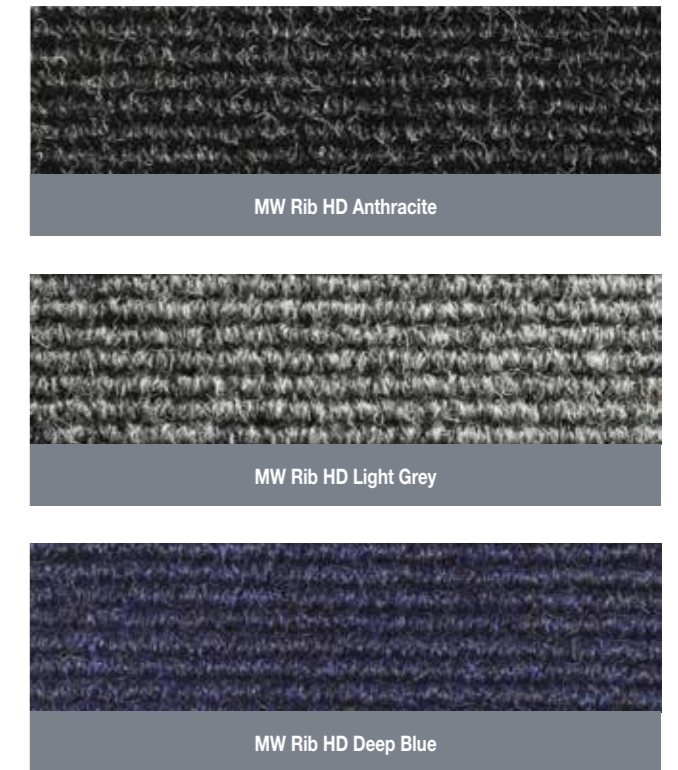
(only available as safety colour inserts)

Style Specialist entrance carpet
Fibre Construction 85% Polypropylene



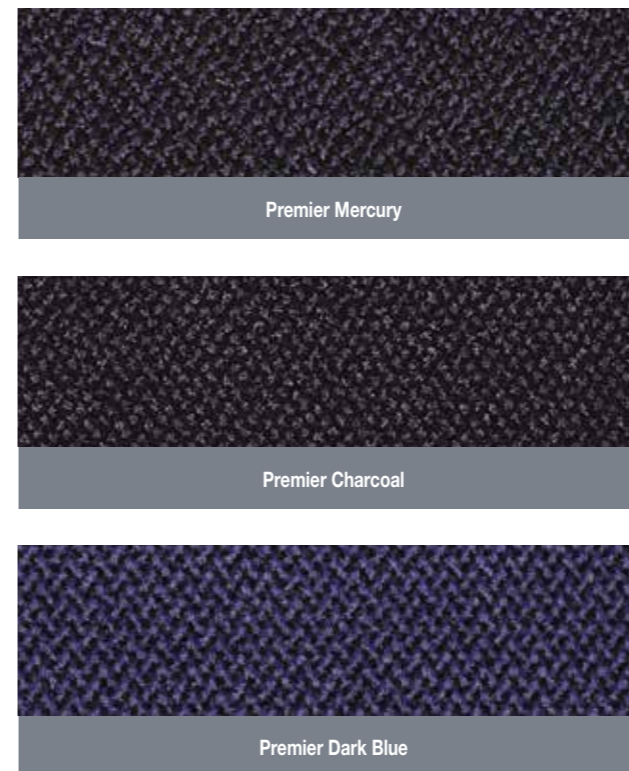
MW Rib HD

Style Tufted Twist Pile
Fibre Construction 85% Polypropylene
 15% Recycled Polyester



Premier

Style Tufted Twist Pile
Fibre Construction 80% Wool / 20% Nylon + monofilament scraper



TREADSURE 205

- Easy to install
- Suitable for wheel and trolley traffic
- Unrivalled weight
- Will not buckle or bounce under pressure

Treadsure 205 is also available with EXT Mat inserts, which allows for external installation.

There is also the option to use T-Bars, which provide a more distinct visual separation between modules in the matwell.



mat.works

Entrance Solutions

Get in touch to order your samples

Farfield Park, Manvers, Wath-upon-Deerne, Rotherham, S63 5DB

Sales - T: +44 (0) 1709 763 839 | E: sales@mat-works.co.uk
Samples - T: +44 (0) 1709 763 805 | E: samples@mat-works.co.uk

www.mat-works.co.uk

part of the group

