

Nouveau Basics

dctuk.com



0345 222 1544
www.dctuk.com

Table of content



03

Product features

04

The colours

05

Resistant

06

Certifications

07

Fitting Projects

09

Specifications

Product features

✓ 50cm x 50cm carpet tiles

✓ 100% Polypropylene

✓ Ideal for commercial spaces

✓ Durable and easy to maintain

✓ 5 year guarantee

✓ Manufactured in the EU

✓ Delivered next working day

✓ 3 colours available

The colours

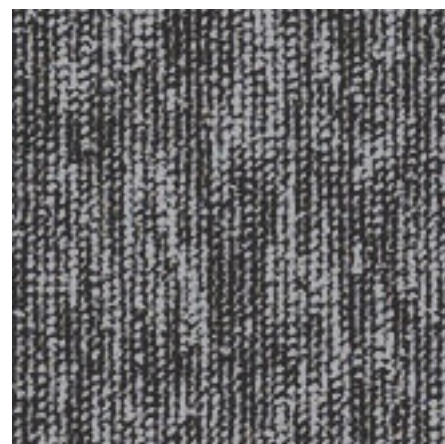
The Nouveau Basics range is the perfect way to transform your commercial space and/or workplace without breaking the bank. These amazing carpet tiles are available in 3 colourways and they are delivered in the next working day!



Black Fleck



Graphite Fleck



Grey Fleck

Resistant



Get your groove on with these funky flecked carpet tiles! These carpet tiles are 50cm x 50cm and made of 100% polypropylene - so you know they're tough enough to handle whatever you throw at them. Not only will they give your space a killer new look, but with their low level loop pile and thickness of 5mm, Nouveau Basics is ready to shake up your space!

**Affordable and resistant.
Do you want any better than
this?!**

Certifications



Manufactured in France, the land of baguettes, Nouveau Basics passes all EU certifications including fire resistant. Plus it has a 5 year guarantee and because it's 100% polypropylene, it has excellent anti-static properties. Perfect for any commercial environment, these tiles are delivered fast and fitted by our amazing fitting team, so what are you waiting for?

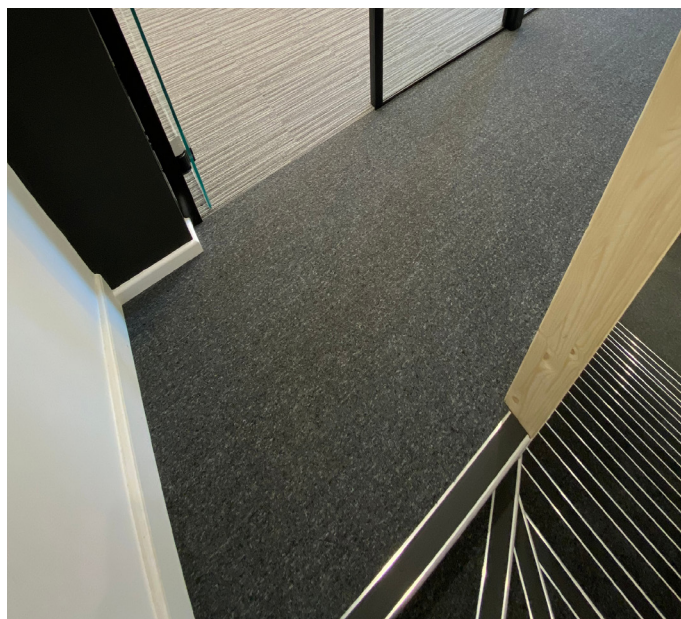
**Stain resistant and durable
against heavy foot-traffic!**

Fitting projects

Whether you need to renovate your home or office, or if you are in charge of renovating a schoolroom or airport, DCTUK is here for you! Our fitting teams will take care of everything so your home or workspace will be ready to show off to lots of envious eyes before you know it.

We want to make our customers' life easier; your satisfaction matters most - we're always available at any time by phone call or email. You can see below some projects completed using our very own Nouveau Basics. Take a look. You won't be disappointed.

Dental Focus



Fitting for the home

What we do

- ✓ Straight lay (all products)
- ✓ Uplift/dispose of existing flooring
- ✓ Recycling of existing flooring
- ✓ Subfloor preparation
- ✓ Evenings & Weekends
- ✓ Cap & cove for vinyl



Fitting for the workplace

What we do

- ✓ Straight lay (all products)
- ✓ Uplift & dispose existing flooring
- ✓ Recycling of existing flooring
- ✓ Moving furniture
- ✓ Subfloor preparation
- ✓ Free design service
- ✓ Free site survey
- ✓ Evenings and weekend work
- ✓ Cap & cove for vinyl
- ✓ Others



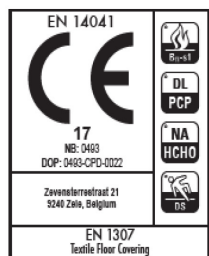
Specifications

Low weight low level loop - Fine loop 1/12

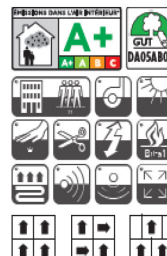
| | |
|--|--------------------------|
| PILE MATERIAL COMPOSITION DU VELOURS POLMATERIAL POOLMATERIAAL | 100% Polypropylene |
| SECONDARY BACKING DOSSIER RÜCKEN TAPIJTRUG | BBack |
| TOTAL WEIGHT POIDS TOTAL GESAMTGEWICHT TOTAAL GEWICHT | Ca. 3695g/m ² |
| PILE WEIGHT POIDS DU VELOURS POLGEWICHT POOLGEWICHT | Ca. 350g/m ² |
| PILE ABOVE BACKING POIDS DE VELOURS UTILE POLNUTZSCHICHTGEWICHT NUTTIG POOLEGEWICHT | N/A |
| TOTAL HEIGHT HAUTEUR TOTALE GESAMTHÖHE TOTALE HOOGTE | Ca. 5,1mm |
| PILE HEIGHT HAUTEUR DU VELOURS FLORHÖHE POOLHOOGTE | Ca. 2,8mm |

| | |
|--|------------------------------------|
| PILE DENSITY DENSITÉ DU VELOURS POLROHDICHTE POOLDICHTHEID | N/A |
| TUFT DENSITY NOMBRE DE TOUFFES NOPPENZAHL AANTAL NOPPEN | Ca. 217120/m ² |
| CLASSIFICATION CLASSEMENT KLASSIFIKATION CLASSIFICATIE | Classe 31 LC1 - PRODIS No 77D7D06D |
| CASTOR CHAIR SUITABILITY CHAISE À ROULETTES STUHLROLLENEIGNUNG ROLSTOELGESCHIKTHEID | N/A |
| FIRE RESISTANCE COMPORTEMENT AU FEU BRENNVERHALTEN BRANDGEDRAG | Bfl-s1 - affixed on concrete |
| FASTNESS TO LIGHT SOLIDITÉ À LA LUMIÈRE LICHTECHTHEIT LICHTECHTHEID | N/A |
| SLIP RESISTANCE RÉSISTANCE AU GLISSEMENT RUTSCHFESTIGKEIT SLIP WEERSTAND | EN 14041 2004/AC: 2006 |
| COLOUR FASTNESS TO WATER SOLIDITÉ À L'EAU WASSERECHTHEIT WATERECHTHEID | EN 14041 2004/AC: 2006 |

| | |
|--|---|
| <p>THERMAL CONDUCTIVITY CONDUCTIVITÉ THERMIQUE WÄRMELEITFÄHIGKEIT WARMTEGELEIDING</p> | <p>EN 14041 2004/AC: 2006</p> |
| <p>IMPACT NOISE RATING ISOLATION PHONIQUE TRITTSCHALLVERBESSERUNG GELUIDSISOLATIE</p> | <p>ΔL_w: 21dB ISO</p> |
| <p>SOUND ABSORPTION ABSORPTION PHONIQUE SCHALLABSORPTIONSGRAD GELUIDSABSORPTIE</p> | <p>ISO 354 aw: 0,15</p> |
| <p>PERMANENTLY ANTISTATIC ANTISTATIC PERMANENT PERMANENT ANTISTATISCH PERMANENT ANTISTATISCH</p> | <p>EN 14041 2004/AC: 2006</p> |
| <p>TRANSVERSAL RESISTANCE RESISTANCE TRANSVERSALE DURCHGANGSWIDERSTAND DOORGANGSWEERSTAND</p> | <p>N/A</p> |
| <p>SIZE DIMENSIONS ABMESSUNG AFMETINGEN</p> | <p>50 x 50cm</p> |
| <p>PACKAGING EMBALLAGE VERPACKUNG VERPAKKING</p> | <p>6m² per box - : 120m² per pallet</p> |
| <p>DIMENSIONAL STABILITY STABILITE DIMENSIONNELLE DIMENSIONSSTABILITAT DIMENSIONALE STABILITEIT</p> | <p>N/A</p> |



FS12/02
M01 /17





dctuk.com

Social Media

 facebook.com/dctuk

 instagram.com/dctukdesign

 youtube.com/dctuk

 twitter.com/dctuk

0345 222 1544

www.dctuk.com