

# TARASAFE STANDARD



**PUR treated vinyl safety flooring for heavy traffic contract applications**



**7731 Marbre**  
LRV: 51.2 - WR: 0509



**7618 Edelweiss**  
LRV: 57.9 - WR: 2786



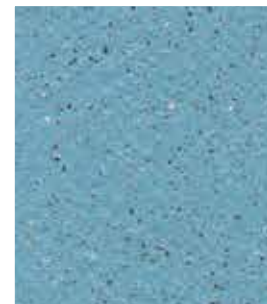
**7767 Dove Grey**  
LRV: 34.1 - WR: 0336



**7386 Savana**  
LRV: 44.3 - WR: 0386



**7508 Avocado**  
LRV: 32.8 - WR: 2603



**7704 Sky Blue**  
LRV: 31.6 - WR: 2259



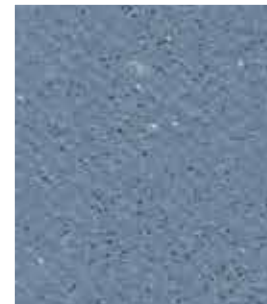
**7773 Storm**  
LRV: 21.3 - WR: 0033



**7312 Dune**  
LRV: 45.8 - WR: 2144



**7115 Flame**  
LRV: 18.5 - WR: 2651



**7438 Baleine**  
LRV: 21.4 - WR: 0638



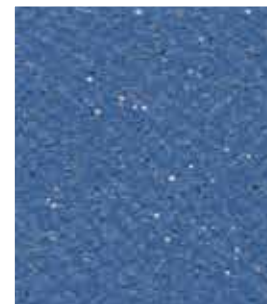
**7801 Noir**  
LRV: 5.7 - WR: 0675



**7302 Sahara**  
LRV: 35.1 - WR: 0094



**7107 Poppy**  
LRV: 11.4 - WR: 2947



**7709 Royal Blue**  
LRV: 15.3 - WR: 0584

## Performances and benefits



Brighter, cleaner crystal particles that add real sparkle



High resistance to heavy traffic




Matt finish for an improved design experience



Easier to cut-up 5 times more blade life



Easier to install, lighter & more flexible to handle

 Compact sheet without foam backing  
LRV: Light Reflectance Value  
WR: Welding Rod = 0585 + colour code number  
\* For more details visit the [greenguide.org.uk](http://greenguide.org.uk)

**IN YOUR LOCAL DISTRIBUTOR NOW!**

**Gerflor**  
theflooringroup

# SAFETY FLOORING



Z0012371

**TARASAFE STANDARD** with **PUR** surface treatment is a slip resistant safety vinyl floorcovering, with a PVC wear layer and deeply **inlaid mineral crystal particles** (patented). It is reinforced by a glass fibre grid and available in a sheet format. It is an ideal solution for **heavy traffic applications** where slip resistance, durability, hygiene and easy maintenance are required.

**TARASAFE STANDARD** is suitable for most contract & commercial areas. According to ISO 22196, it has anti-bacterial activity against MRSA of 99% after 24h00. It is eco-friendly, 100% recyclable, Floorscore® certified and does not contain any heavy metals or CMR 1&2, it is also 100% compliant with REACH. The product emission rate of volatile organic compounds is < 100 µg/m³ (TVOC after 28 days – ISO 16000 -6).

The **PUR** surface treatment improves the product performance in term of stain resistance and durability.

## TARASAFE STANDARD

### DESCRIPTION

Total Thickness	EN ISO 24346 [EN 428]	mm	2.00
Thickness of wearlayer	EN ISO 24340 [EN 429]	mm	0.85
Weight	EN ISO 23997 [EN 430]	g/sq.m	2460
Width/Length of Sheet	EN ISO 24341 [EN 426]	cm/lm	200/20

### CLASSIFICATION

Norm/Product Specification	-	-	EN ISO 10582 [EN 649]
European classification	EN ISO 10874 [EN 685]	class	34-43
Fire Rating	EN 13501-1	class	Bfl-s1
Static electrical propensity	EN 1815	kV	< 2
Slip resistance: Pendulum Test (dry & wet)	BS 7976-2	PTV	> 36
Surface roughness Rz	-	µm	≥ 20
Slip resistance wet: ramp test with oil	DIN 51 130	class	R10
Slip resistance wet: ramp test with water	DIN 51 097	class	B
Slip resistance – ramp test	EN 13845 [annex C]	class	ESf-ESb

### PERFORMANCE

Wear Resistance	EN 660.2	mm³	≤ 2
Wear group	NF 189	group	T
Type Binder content	EN ISO 10582	type	I
Dimensional stability	EN ISO 23999 [EN 434]	%	≤ 0.40
Residual indentation	EN ISO 24343-1 [EN 433]	mm	≤ 0.05
Castor chair test (type W)	ISO 4918 [EN 425]	-	OK
Thermal conductivity	EN ISO 10456 [EN 12524]	W/(m.K)	0.25
Colour fastness	EN 20 105-B02	degree	≥ 6
Surface treatment	-	-	PUR
Chemical products resistance	EN ISO 26987 [EN 423]	-	OK
Anti-bacterial activity (MRSA) <sup>(1)</sup>	ISO 22196	-	> 99% Inhibits growth

### ENVIRONMENT / INDOOR AIR QUALITY

TVOC after 28 days	ISO 16000-6	µg/m³	< 100
Certification	-	-	Floorscore®

### CE MARKING

CE	EN 14 041	-	

\* For more details visit gerflor.com

(1) The implementation of an effective cleaning method is the best defence against infection.



Installation and Maintenance Guidelines, Complementary ranges available on our Gerflor website.

**IMPORTANT:** The information contained in this document is valid from 1/01/2018 and is subject to change at any time without notice. In the context of constantly changing technology, our customers are responsible, prior to any use, for checking with us that this document is the version in force.

Rubber leaves indelible stains on vinyl floorings: do not use mats with rubber backing and replace tubular furniture feet with those made of PVC or polyamide. Place mats of sufficient length at entrances to reduce outside sources of dirt.

## WE CARE | WE ACT. Our commitments for a sustainable future

<p><b>CARBON FOOTPRINT*</b></p> <p>-20 % kg CO<sub>2</sub> equivalent/m<sup>2</sup> between 2020 and 2025</p>	<p><b>BIOSOURCED CONTENT**</b></p> <p>10 % by 2025</p>	<p><b>RECYCLED CONTENT</b></p> <p>30 % by 2025</p>	<p><b>ADHESIVE FREE***</b></p> <p>35 % by 2025</p>	<p><b>ANNUAL VOLUME RECYCLED</b></p> <p>60,000 t by 2025</p>
<p>* Scopes 1 &amp; 2 defined in the GHG protocol ** % of activity with biosourced materials *** % of activity with adhesive free solutions</p>				