

**Nouveau
Portia**



0345 222 1544
www.dctuk.com

Table of content



03

Product features

04

The colours

05

Resistant

06

Affordable and beautiful

07

Fitting

08

Specifications

Product features

✓ 50cm x 50cm carpet tiles

✓ Helps reduce excess noise

✓ Strong nylon construction

✓ Suitable for heavy contract use

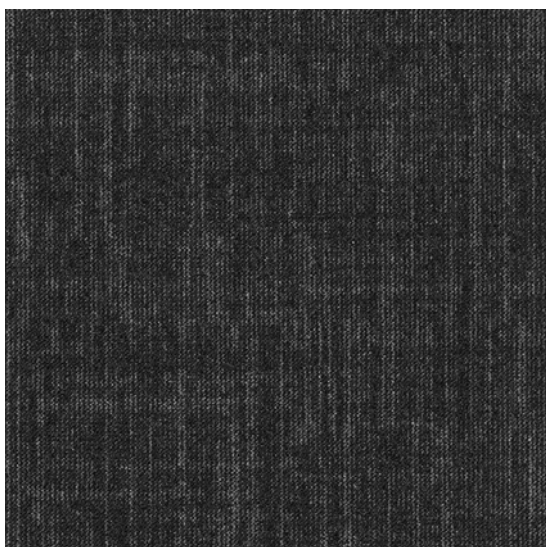
✓ Load-bearing bitumen backing

✓ Delivered in 5-7 working days

✓ Stylish modern surface design

The colours

If you've been hunting high and low for the perfect flooring solution for your latest project brief then sigh no more because the search is over, welcome Nouveau Portia. Sharing the same name as one of William Shakespeare's most famous heroines, this tufted range is as beautiful, rich and intelligent as Portia herself.



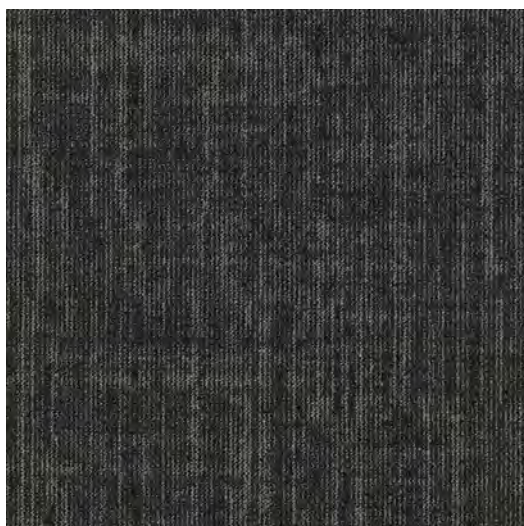
Antonio



Balthazar



Bassanio



Shylock

Resistant



Good fastness to light and colour, as well as thermal resistance and resistance to wear or damage make this 100% nylon tile the perfect contender for commercial and public spaces where footfall is high and time for carpet maintenance is low. Nouveau Portia also offers a range of installation options (monolithic, quarter turn and brick lay) so you really can tailor this tile to meet the your own personal taste or the preferences of your clients.

Ultra resistant! Better than this?! We don't think so.

Affordable and beautiful



Her carpet tile counterpart is extremely kind to your budget, high in the interior style stakes and offers a whole host of advantageous properties. Each of the four corporate-chic colour options features a luminescent silver thread that adds dimension and elevates the classic design to excellence.

**Affordable, and beautiful.
Do want any better than this?!**

Fitting for the home

What we do

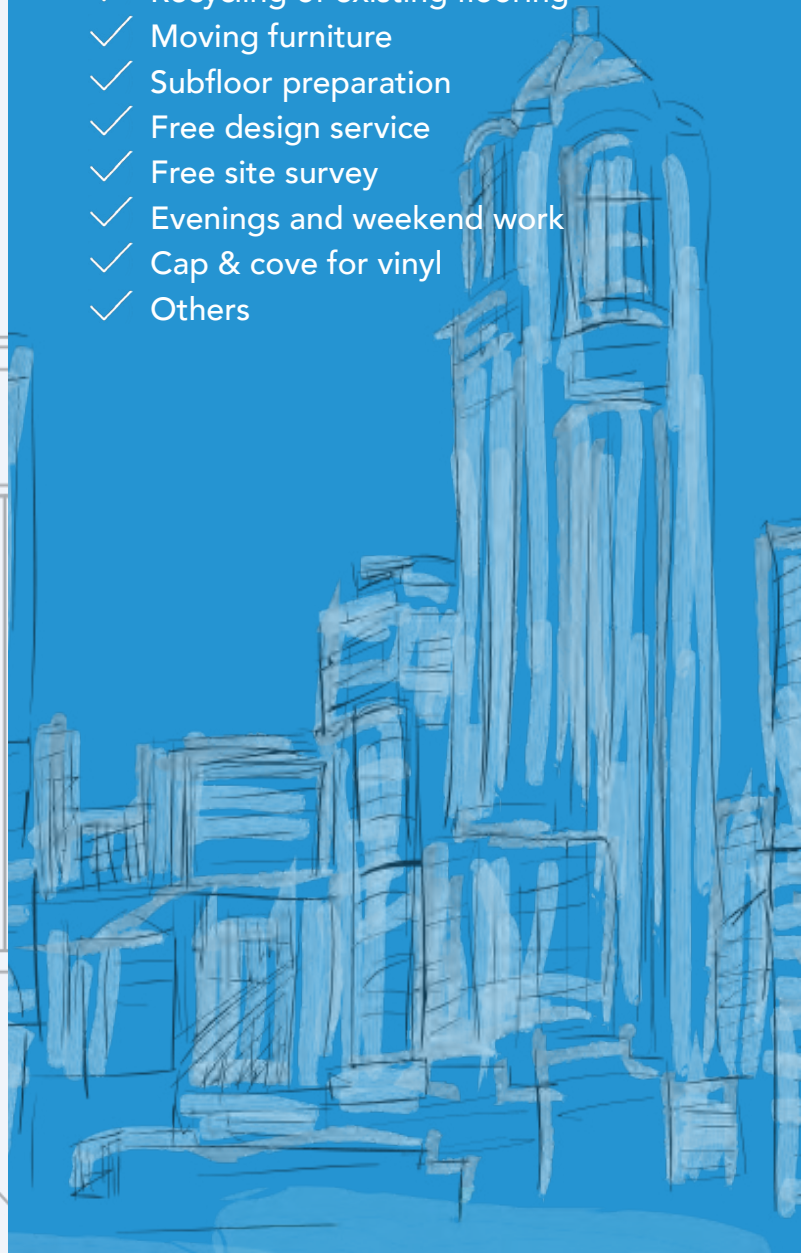
- ✓ Straight lay (all products)
- ✓ Uplift/dispose of existing flooring
- ✓ Recycling of existing flooring
- ✓ Subfloor preparation
- ✓ Evenings & Weekends
- ✓ Cap & cove for vinyl



Fitting for the workplace

What we do

- ✓ Straight lay (all products)
- ✓ Uplift & dispose existing flooring
- ✓ Recycling of existing flooring
- ✓ Moving furniture
- ✓ Subfloor preparation
- ✓ Free design service
- ✓ Free site survey
- ✓ Evenings and weekend work
- ✓ Cap & cove for vinyl
- ✓ Others



Specifications

1/10" loop pile / 1/10" poil bouclé / 1/10" Schlingenpol / 1/10" lussenpool

PILE MATERIAL COMPOSITION DU VELOURS POLMATERIAL POOLMATERIAAL	100% PA6 Solution Dyed Nylon
SECONDARY BACKING DOSSIER RÜCKEN TAPIJTRUG	Back2Back : Modified bitumen
TOTAL WEIGHT POIDS TOTAL GESAMTGEWICHT TOTAAL GEWICHT	Ca. 4.400g/m ²
PILE WEIGHT POIDS DU VELOURS POLGEWICHT POOLGEWICHT	Ca. 630g/m ²
PILE ABOVE BACKING POIDS DE VELOURS UTILE POLNUTZSCHICHTGEWICHT NUTTIG POOLEGEWICHT	Ca. 360g/m ²
TOTAL HEIGHT HAUTEUR TOTALE GESAMTHÖHE TOTALE HOOGTE	Ca. 6,5mm
PILE HEIGHT HAUTEUR DU VELOURS FLORHÖHE POOLHOOGTE	3,0mm

PILE DENSITY
DENSITÉ DU VELOURS
POLROHDICHTHE
POOLDICHTHEID

Ca. 0,120g/cm²

TUFT DENSITY
NOMBRE DE TOUFFES
NOPPENZAHL
AANTAL NOPPEN

Ca. 245.000/m²

CLASSIFICATION
CLASSEMENT
KLASSIFIKATION
CLASSIFICATIE

EM 1307 33 – LC1

CASTOR CHAIR SUITABILITY
CHAISE À ROULETTES
STUHLROLLENEIGNUNG
ROLSTOELGESCHIKTHEID

EN 985 A : continuous use

FIRE RESISTANCE
COMPORTEMENT AU FEU
BRENNVERHALTEN
BRANDGEDRAG

Bfl-s1 (EN 13501 – 1)

FASTNESS TO LIGHT
SOLIDITÉ À LA LUMIÈRE
LICHTECHTHEIT
LICHTECHTHEID

ISO 105-B02 ≥ 7

RUBBING FASTNESS
SOLIDITE A LA LUMIERE
LICHTECHTHEIT
LICHTECHTHEID

ISO 105-X12 ≥ 4

COLOUR FASTNESS TO WATER
SOLIDITÉ À L'EAU
WASSERECHTHEIT
WATERECHTHEID

EN ISO 105-E01 ≥ 4

THERMAL RESISTANCE
RÉSISTANCE THERMIQUE
WÄRMEDURCHLASSWIDERSTAND
WARMTEDOORLAATWEERSTAND

ISO 8302 – 0,059m²K/W

IMPACT NOISE RATING
ISOLATION PHONIQUE
TRITTSCHALLVERBESSERUNG
GELUIDSISOLATIE

ISO 10140 ΔL_w : 25dB

SOUND ABSORPTION
ABSORPTION PHONIQUE
SCHALLABSORPTIONSGRAD
GELUIDSABSORPTIE

ISO 354 α_w : 0,15

PERMANENTLY ANTISTATIC
ANTISTATIC PERMANENT
PERMANENT ANTISTATISCH
PERMANENT ANTISTATISCH

ISO 6356 $\leq 2kV$

TRANSVERSAL RESISTANCE
RESISTANCE TRANSVERSALE
DURCHGANGSWIDERSTAND
DOORGANGSWEERSTAND

ISO/DIS 10965 $\leq 10^9 0hm$

SIZE
DIMENSIONS
ABMESSUNG
AFMETINGEN

50 x 50cm

PACKAGING
EMBALLAGE
VERPACKUNG
VERPAKKING

Box: 5m² - Pallet: 20 boxes

DIMENSIONAL STABILITY
STABILITE DIMENSIONNELLE
DIMENSIONSSTABILITAT
DIMENSIONALE STABILITEIT

EN 986 max. 0,2%



ISO 12/02
AND /17





Social Media

 facebook.com/dctuk

 instagram.com/dctukdesign

 youtube.com/dctuk

 twitter.com/dctuk

0345 222 1544

www.dctuk.com