

Nouveau Home Comforts



0345 222 1544
www.dctuk.com

Table of content



03

Product features

04

The colours

05

Combinations

06

Beautiful

07

StainSafe®

08

Fitting Projects

10

Specifications

Product features

✓ 50cm x 50cm carpet tiles

✓ Made with StainSafe material - easy to clean

✓ Suitable for residential and commercial use

✓ Soft cut pile construction

✓ Bleach cleanable carpet tiles

✓ Super thick pile height



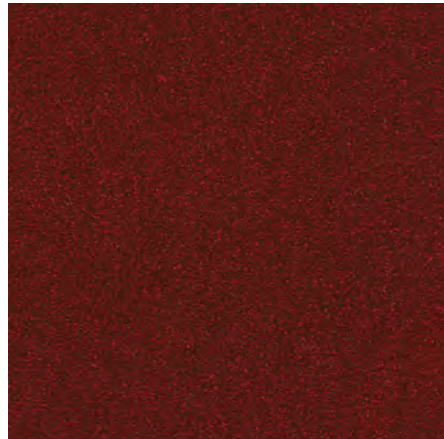
The colours



Biscuit Tin



Bubble Bath



Candle Wax



Duvet Day



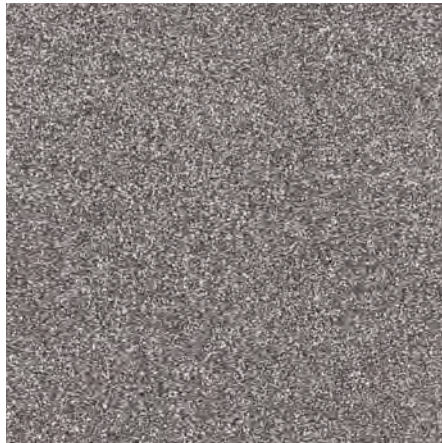
Fresh Linen



Hot Coca



Lights Out



Low Light

Combinations



Nouveau Home Comforts is a thick and comfortable carpet tile, which makes it perfect for your home! Even visually, every 6 colours available make you wish to have a cuppa near the fireplace on a cold and rainy day. For that, if you want to give your place a nice different look, we recommend you to play with its different colours. You can use the features of the room or the display and colours of the furniture.

Want to learn more about it?



Watch a youtube video



Read our blog

Beautiful



Nouveau Home Comforts is one of our best sellers because it's easy fit, it's a super soft carpet tile and it has the perfect collection of brown or beige carpet tiles for the home. Not only is Home Comforts pleasant to look at and fashion-forward when it comes to interior design, it also boasts impressive light and water fastness properties so you can have faith in its appearance and performance retention.

Beautiful and with good performance. Do want any better than this?!

StainSafe®



Stainsafe® does not fail to provide complete protection against stains and dirt. These carpet tiles are not treated with any chemicals or coatings. It absorbs no moisture, therefore no dirt or liquid will be absorbed into the fibres. Stainsafe® is only available for 100% Polypropylene carpet tiles. Therefore it will also be incredibly durable, hardwearing and long lasting.

Want to learn more about it?



[Read our blog](#)

Fitting projects

Whether you need to renovate your home or office, or if you are in charge of renovating a schoolroom or airport, DCTUK is here for you! Our fitting teams will take care of everything so your home or workspace will be ready to show off to lots of envious eyes before you know it.

We want to make our customers' life easier; your satisfaction matters most - we're always available at any time by phone call or email. You can see below some projects completed using our very own Nouveau Connections Stripe. Take a look. You won't be disappointed.

Residential House



Fitting for the home

What we do

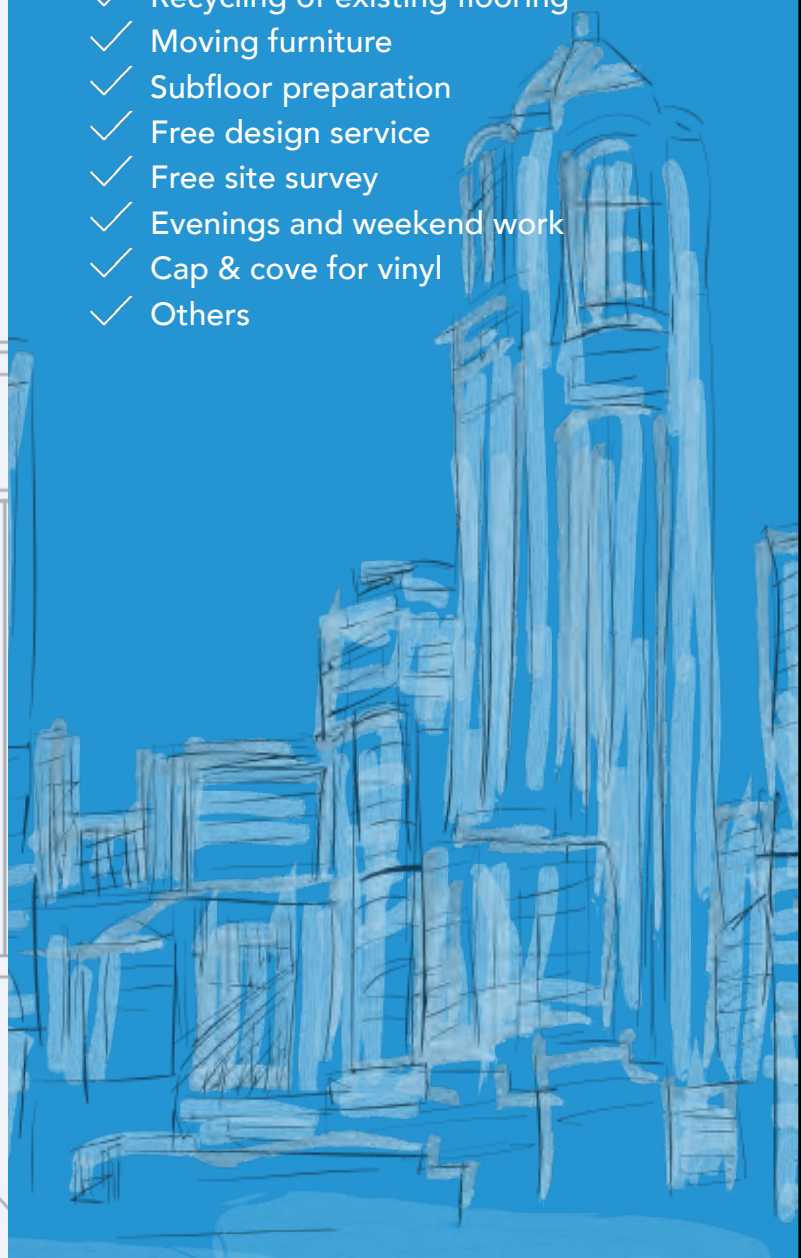
- ✓ Straight lay (all products)
- ✓ Uplift/dispose of existing flooring
- ✓ Recycling of existing flooring
- ✓ Subfloor preparation
- ✓ Evenings & Weekends
- ✓ Cap & cove for vinyl



Fitting for the workplace

What we do

- ✓ Straight lay (all products)
- ✓ Uplift & dispose existing flooring
- ✓ Recycling of existing flooring
- ✓ Moving furniture
- ✓ Subfloor preparation
- ✓ Free design service
- ✓ Free site survey
- ✓ Evenings and weekend work
- ✓ Cap & cove for vinyl
- ✓ Others



Specifications

1/10" loop pile / 1/10" poil bouclé / 1/10" Schlingenpol / 1/10" lussenpool

PILE CONTENT COMPOSITION DU VELOURS POLMATERIAL POOLSAMENSTELLING	100% PP Stainsafe®
PILE WEIGHT POIDS DU VELOURS POLGEWICHT POOLGEWICHT	Ca. 650g/m ²
TOTAL WEIGHT POIDS TOTAL GESAMTGEWICHT TOTAAL GEWICHT	Ca.4.300g/m ²
PILE HEIGHT HAUTEUR DU VELOURS FLORHÖHE POOLHOOGTE	Ca. 2,2mm
TOTAL HEIGHT HAUTEUR TOTALE GESAMTHÖHE TOTALE HOOGTE	Ca. 4,7mm
TUFT DENSITY NOMBRE DE TOUFFES NOPPENZAHL AANTAL NOPPEN	Ca. 185.650/m ²

05/20 All rights reserved to alter technical specifications - Warranty conditions, see www.stain-safe.com
Sous réserve de modifications techniques - conditions de garantie, voir www.stain-safe.com
Unter Vorbehalt technischer Änderungen - Garantiebedingungen siehe www.stain-safe.com
Onder voorbehoud van wijzigingen van technische specificaties - garantievoorwaarden: www.stain-safe.com

SIZE
DIMENSIONS
ABMESSUNG
AFMETINGEN

50 x 50 cm

PACKAGING
EMBALLAGE
VERPACKUNG
VERPAKKING

5 m²

ANTISTATIQUE
ANTISTATIQUE
ANTISTATISCH
ANTISTATISCH

< 2 kV

FIRE CLASS
CLASSEMENT FEU
BRANDVERHALTENSKLASSE
BRANDKLASSE

Efl-s] (EN 13501-1)

FASTNESS TO LIGHT
SOLIDITÉ À LA LUMIÈRE
LICHTECHTHEIT
LICHTECHTHEID

5-6

WATER FASTNESS
SOLIDITÉ À L'EAU
WASSERECHTHEIT
WATERECHTHEID

3-4





Social Media

 facebook.com/dctuk

 instagram.com/dctukdesign

 youtube.com/dctuk

 twitter.com/dctuk

0345 222 1544
www.dctuk.com