

# Nouveau Essentials



0345 222 1544  
[www.dctuk.com](http://www.dctuk.com)

## Table of content



**03**

**Product features**

**04**

**The colours**

**05**

**Combinations**

**06**

**Affordable and Resistant**

**07**

**Fitting Projects**

**09**

**Specifications**

# Product features

✓ 50cm x 50cm carpet tiles

✓ Perfect for commercial spaces

✓ Tough loop pile construction

✓ Manufactured in the UK

✓ Fire resistant properties

✓ Next working day delivery



# The colours

Looking to kit out an office, public area or commercial space with the essentials? You've come to the right place with these Nouveau Essentials carpet tiles. Available in 11 versatile colourways, there's something to suit any small business or large commercial interior.



**Dark blue**



**Dark green**



**Dark grey**



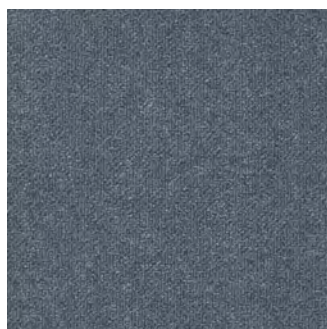
**Electric blue**



**Green**



**Grey**



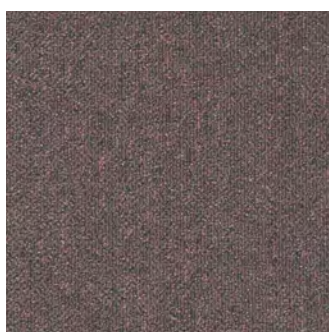
**Light blue**



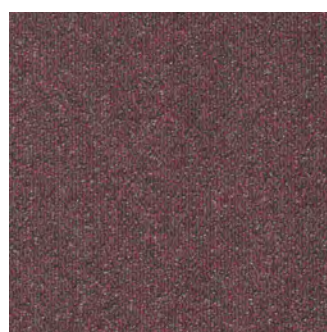
**Light grey**



**Mustard**



**Pink**



**Red**

# Combinations

## Nouveau Shadow

Block colours are extremely versatile and can be as subtle or as statement as you like but sometimes, you need something a little more exciting, so why not mixing one block colour carpet tile with another one with an irreverant design? Nouveau Vogue Shadow is available in 12 colours that will look amazing with Nouveau Essentials.

Ever had that super awkward moment of walking into a meeting thinking it's just a free table? Well, problem solved. Why not use Nouveau Apollo to zone out different areas? So, pop down Nouveau Essentials to show the meeting tables, and pop Nouveau Vogue Shadow down for walkways / other areas.



**Want to learn more about it?**



Watch a youtube video



# Affordable and Resistant



One of life's vital essentials is good quality carpet tiles that are both affordable and stylish and we've got both in the bag. Here at DCTUK we love a little luxury but we also understand the importance of the bare necessities, those simple bare necessities, which is why we created this holy grail range. A comfortable, luxurious, resistant and, affordable carpet tile.

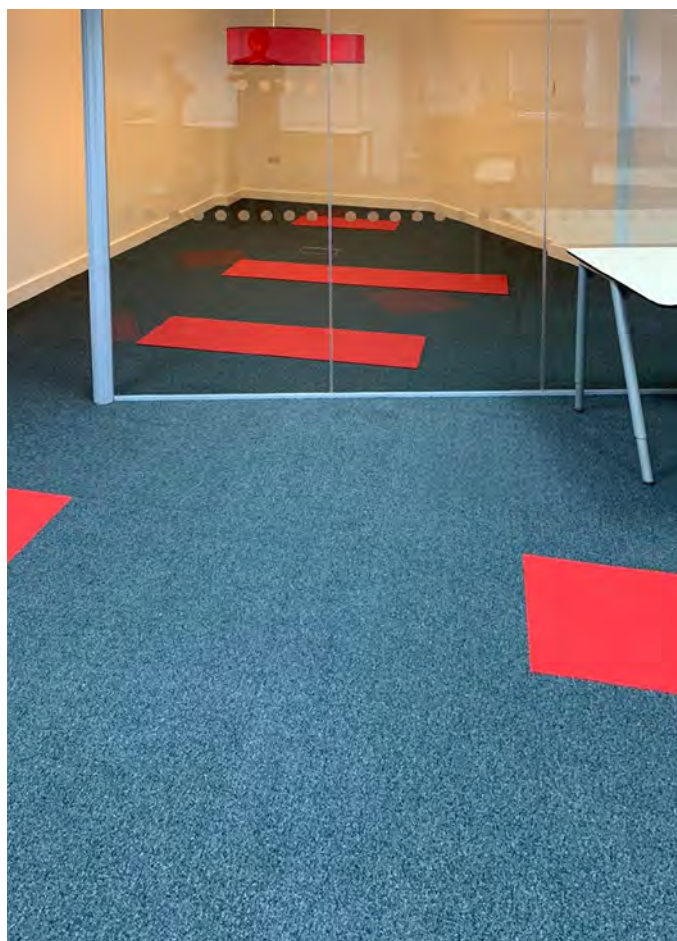
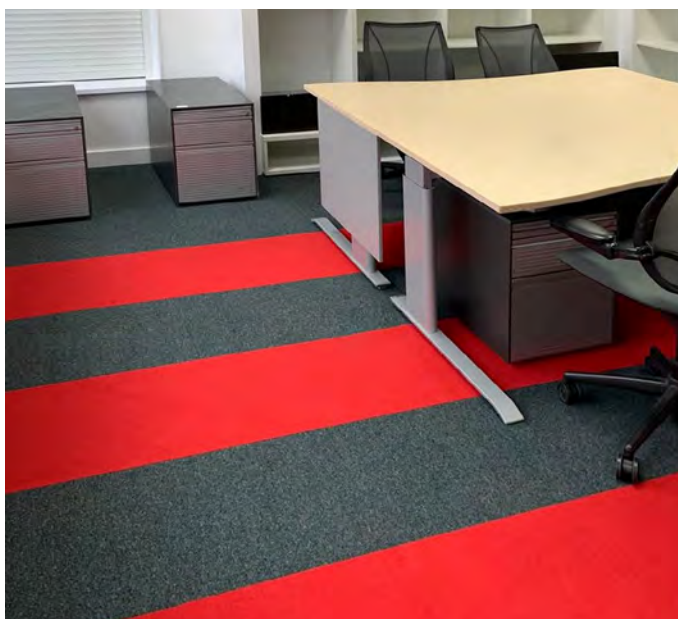
**Affordable and resistant carpet tiles. Do want any better than this?!**

# Fitting projects

Whether you need to renovate your home or office, or if you are in charge of renovating a schoolroom or airport, DCTUK is here for you! Our fitting teams will take care of everything so your home or workspace will be ready to show off to lots of envious eyes before you know it.

We want to make our customers' life easier; your satisfaction matters most - we're always available at any time by phone call or email. You can see below some projects completed using our very own Nouveau Connections Stripe. Take a look. You won't be disappointed.

## Dandy Booksellers London



Learn more about this project



Visit our page

# Fitting for the home

## What we do

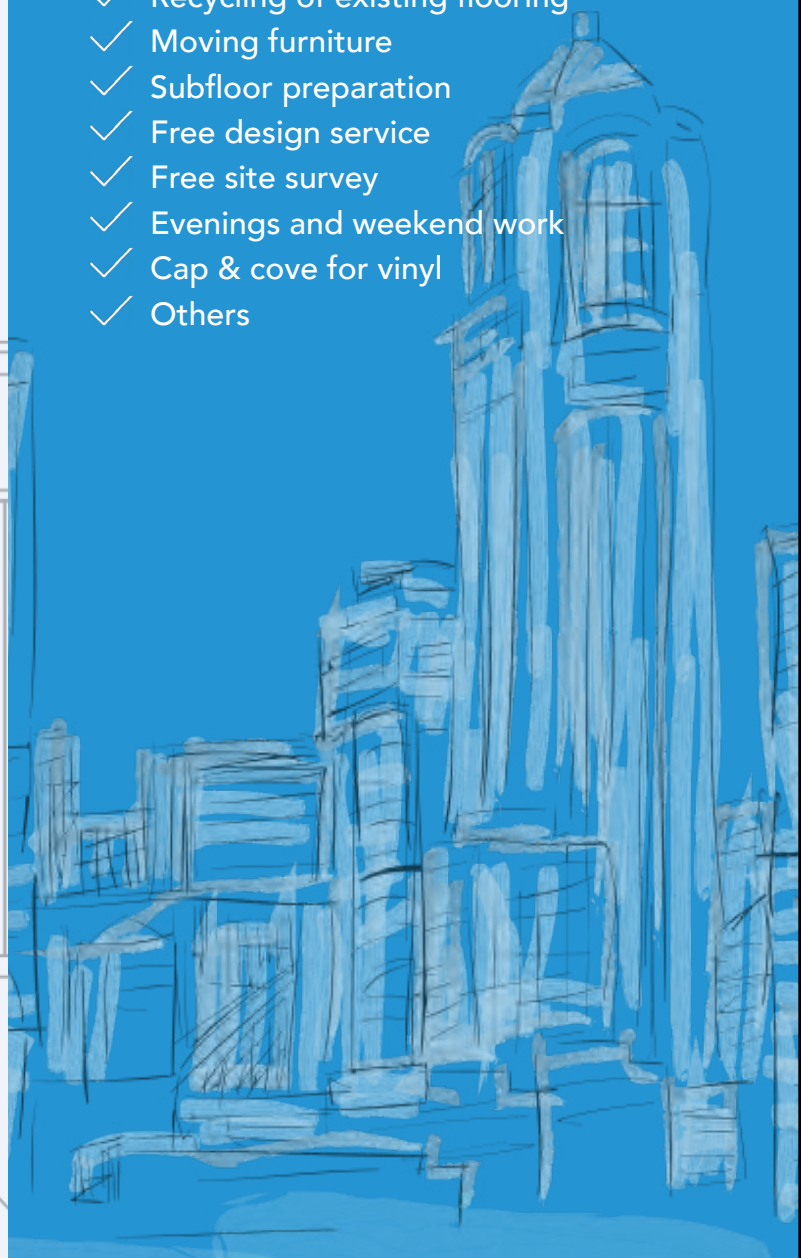
- ✓ Straight lay (all products)
- ✓ Uplift/dispose of existing flooring
- ✓ Recycling of existing flooring
- ✓ Subfloor preparation
- ✓ Evenings & Weekends
- ✓ Cap & cove for vinyl



# Fitting for the workplace

## What we do

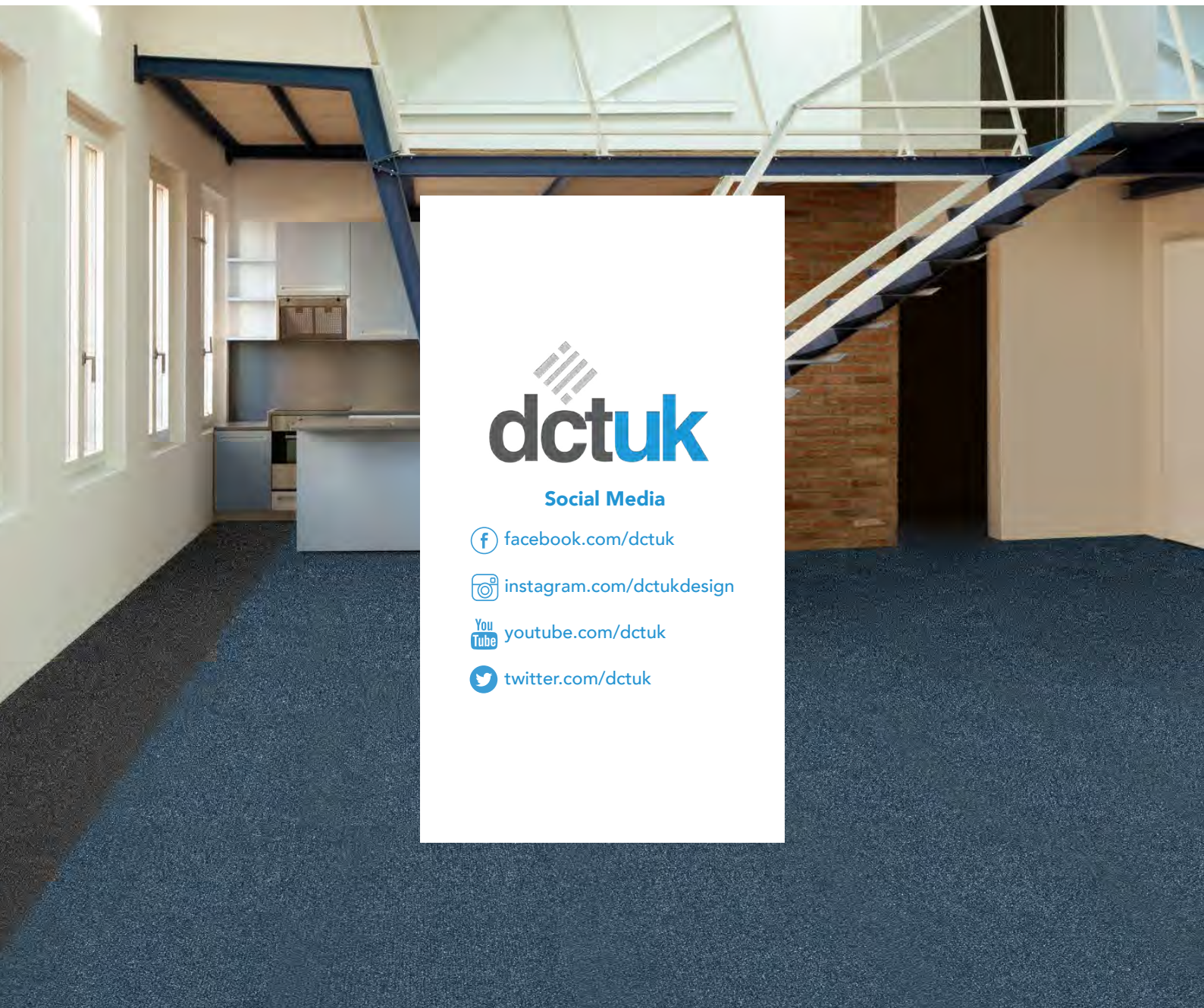
- ✓ Straight lay (all products)
- ✓ Uplift & dispose existing flooring
- ✓ Recycling of existing flooring
- ✓ Moving furniture
- ✓ Subfloor preparation
- ✓ Free design service
- ✓ Free site survey
- ✓ Evenings and weekend work
- ✓ Cap & cove for vinyl
- ✓ Others





# Specifications

CONSTRUCTION	Tufted Loop Carpet Tile
PILE MATERIAL	100% Polypropylene
MACHINE	1/10th Gauge
PRIMARY	Non-woven Polyester
PILE HEIGHT	2.5mm
TOTAL HEIGHT	5.9mm
THERMAL RESISTANCE	(EN 13501-1) Cfl-s1
STITCH RATE	43/10cm
FINISHED PILE WEIGHT	(+/-0.5%) BS 4223 390gm/m <sup>2</sup>
PRECOAT WEIGHT	(+/-0.5%) 810gm/m <sup>2</sup>
BACKING MATERIAL	Oxidised Bitumen with Spun Bonded secondary
BAKING WEIGHT	2,500gm/m <sup>2</sup>
CASTOR CHAIR SUITABILITY	(EN985) B
REINFORCEMENT	Glass tissue for stability
TOTAL WEIGHT	(+/-10%) BS4223 4,180gm/m <sup>2</sup>



**Social Media**

 [facebook.com/dctuk](https://facebook.com/dctuk)

 [instagram.com/dctukdesign](https://instagram.com/dctukdesign)

 [youtube.com/dctuk](https://youtube.com/dctuk)

 [twitter.com/dctuk](https://twitter.com/dctuk)

**0345 222 1544**  
**[www.dctuk.com](http://www.dctuk.com)**