

# Nouveau Dimensions



0345 222 1544  
[www.dctuk.com](http://www.dctuk.com)

## Table of content



**03**

**Product features**

**04**

**The colours**

**05**

**Resistant**

**06**

**Stainsafe**

**07**

**Fitting**

**08**

**Specifications**

# Product features

✓ 50cm x 50cm carpet tiles

✓ Bleach cleanable

✓ Perfect for meeting rooms and breakout areas

✓ Unique patterned design

✓ Made with StainSafe material

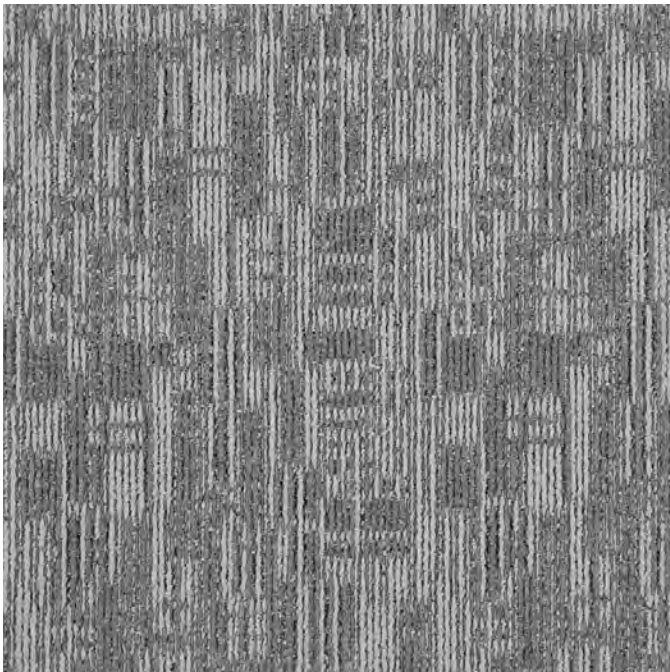
✓ Delivered in 5-7 working days

✓ High antistatic rating

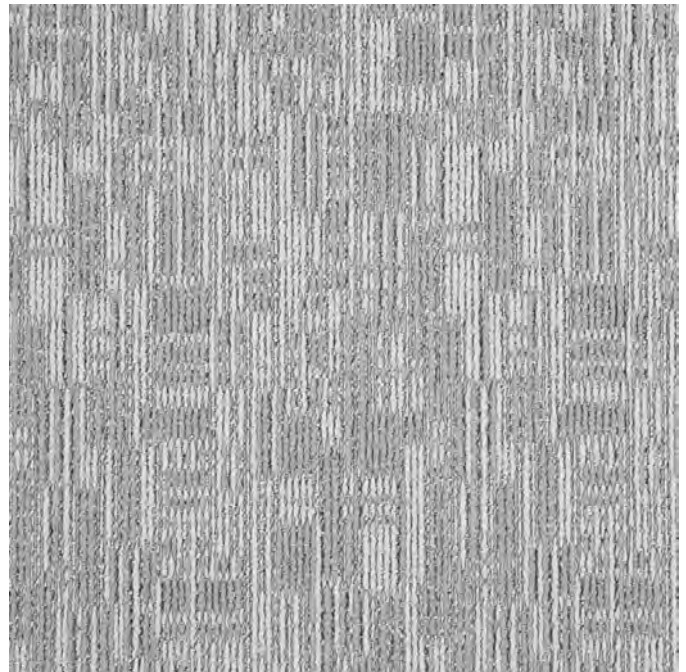
✓ 2 colours available

# The colours

Forget fifty shades of grey because you only need two with this dynamic duo of Extraterrestrial silver and Intergalactic charcoal which work perfectly well on their own or as a team.



**Intergalactic**



**Extraterrestrial**

# Resistant



In another dimension far, far away, there is a little team of aliens sitting at their desks, on their levitating castor chairs, spinning their way through their to-do lists without a care in the world about the longevity of the carpet tile beneath their two-toed feet. A pile height of 4mm, backed with a strong, load-bearing bitumen mean Nouveau Dimension tiles are as compact as they are resilient, while an abstract, tonal pattern provides a burst of modern style.

**Affordable and resistant.  
Do you want any better than  
this?!**

# StainSafe®



Stainsafe® does not fail to provide complete protection against stains and dirt. These carpet tiles are not treated with any chemicals or coatings. It absorbs no moisture, therefore no dirt or liquid will be absorbed into the fibres. Stainsafe® is only available for 100% Polypropylene carpet tiles. Therefore it will also be incredibly durable, hardwearing and long lasting.

**Want to learn more about it?**



Read our blog

# Fitting for the home

## What we do

- ✓ Straight lay (all products)
- ✓ Uplift/dispose of existing flooring
- ✓ Recycling of existing flooring
- ✓ Subfloor preparation
- ✓ Evenings & Weekends
- ✓ Cap & cove for vinyl



# Fitting for the workplace

## What we do

- ✓ Straight lay (all products)
- ✓ Uplift & dispose existing flooring
- ✓ Recycling of existing flooring
- ✓ Moving furniture
- ✓ Subfloor preparation
- ✓ Free design service
- ✓ Free site survey
- ✓ Evenings and weekend work
- ✓ Cap & cove for vinyl
- ✓ Others



# Specifications

1/10" loop pile / 1/10" poil bouclé / 1/10" Schlingenpol / 1/10" lussenpool

PILE MATERIAL COMPOSITION DU VELOURS POLMATERIAL POOLMATERIAAL	100% PP Stainsafe®
TOTAL WEIGHT POIDS TOTAL GESAMTGEWICHT TOTAAL GEWICHT	Ca. 4.250g/m <sup>2</sup>
PILE WEIGHT POIDS DU VELOURS POLGEWICHT POOLGEWICHT	Ca. 4.300g/m <sup>2</sup>
TOTAL HEIGHT HAUTEUR TOTALE GESAMTHÖHE TOTALE HOOGTE	Ca. 7mm
PILE HEIGHT HAUTEUR DU VELOURS FLORHÖHE POOLHOOGTE	Ca. 4mm
TUFT DENSITY NOMBRE DE TOUFFES NOPPENZAHL AANTAL NOPPEN	Ca. 185.650/m <sup>2</sup>

05/20 All rights reserved to alter technical specifications - Warranty conditions, see [www.stain-safe.com](http://www.stain-safe.com)  
Sous réserve de modifications techniques - conditions de garantie, voir [www.stain-safe.com](http://www.stain-safe.com)  
Unter Vorbehalt technischer Änderungen - Garantiebedingungen siehe [www.stain-safe.com](http://www.stain-safe.com)  
Onder voorbehoud van wijzigingen van technische specificaties - garantievoorwaarden: [www.stain-safe.com](http://www.stain-safe.com)



FIRE RESISTANCE  
COMPORTEMENT AU FEU  
BRENNVERHALTEN  
BRANDGEDRAG

Cfl-s1 (EN 13501 – 1)  
Centexbel 0493-CPR-0130

COLOUR FASTNESS TO WATER  
SOLIDITÉ À L'EAU  
WASSERECHTHEIT  
WATERECHTHEID

4-5

SOUND ABSORPTION  
ABSORPTION PHONIQUE  
SCHALLABSORPTIONSGRAD  
GELUIDSABSORPTIE

22 dB

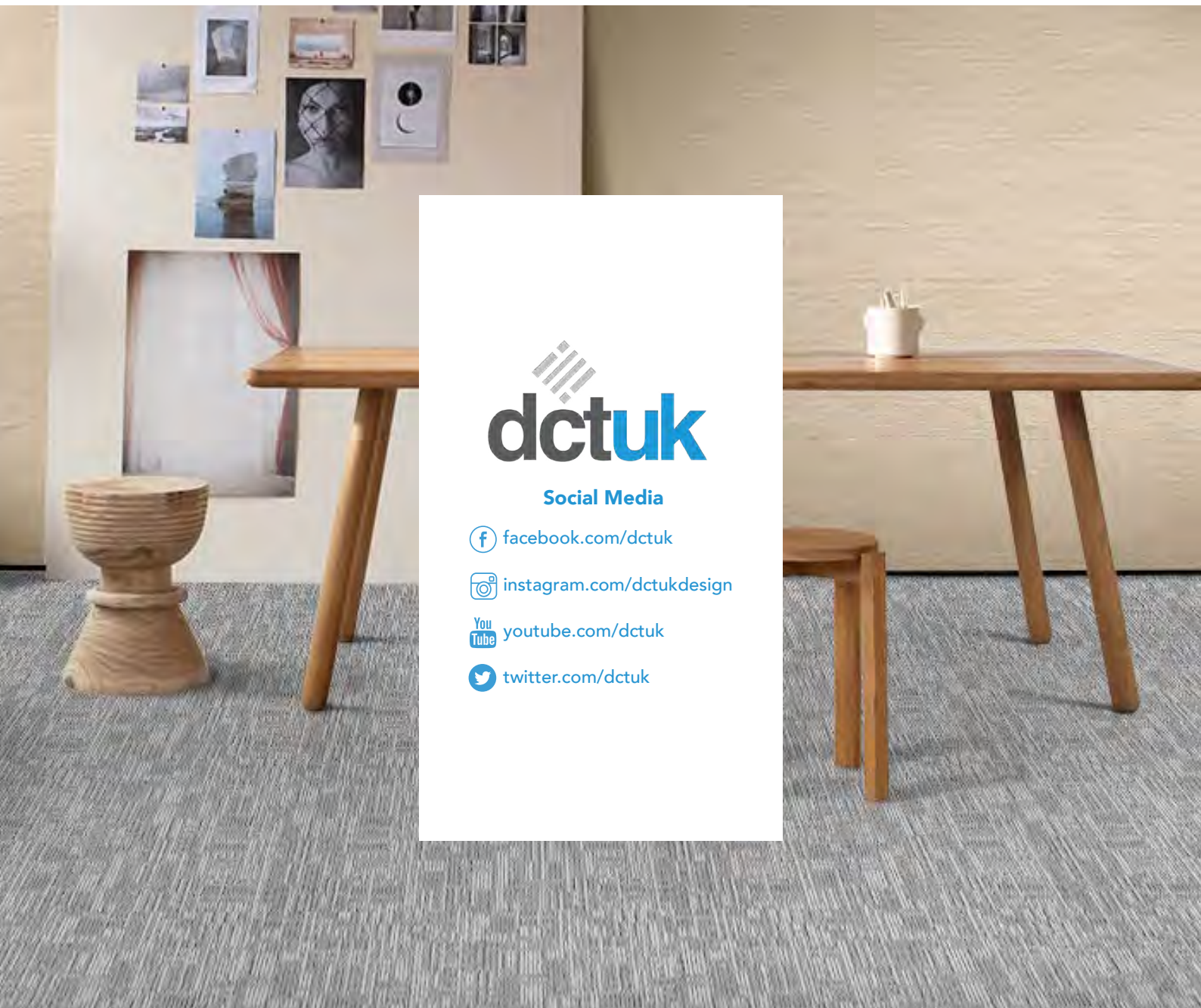
PERMANENTLY ANTISTATIC  
ANTISTATIC PERMANENT  
PERMANENT ANTISTATISCH  
PERMANENT ANTISTATISCH

< 2kV

SIZE  
DIMENSIONS  
ABMESSUNG  
AFMETINGEN

50 x 50cm





**Social Media**

 [facebook.com/dctuk](https://facebook.com/dctuk)

 [instagram.com/dctukdesign](https://instagram.com/dctukdesign)

 [youtube.com/dctuk](https://youtube.com/dctuk)

 [twitter.com/dctuk](https://twitter.com/dctuk)

**0345 222 1544**  
**[www.dctuk.com](http://www.dctuk.com)**