

Nouveau Crescent



the only
thing that
stays the
same is
change

shape.
pt.
ve.

0345 222 1544
www.dctuk.com

Table of content



03

Product features

04

The colours

05

Combinations

06

StainSafe

07

Resistant

08

Fitting Projects

09

Specifications

Product features

✓ 50cm x 50cm carpet tiles

✓ Perfect for offices and public spaces

✓ Made with StainSafe material - easy to clean

✓ Fire resistant qualities

✓ 22dB sound protection

✓ Unique design available in 4 metallic colours

✓ We will fit them for you!

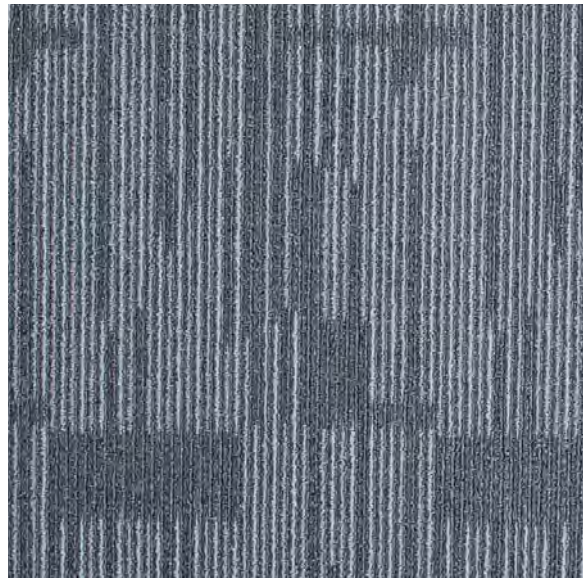
✓ 4 colours available

The colours

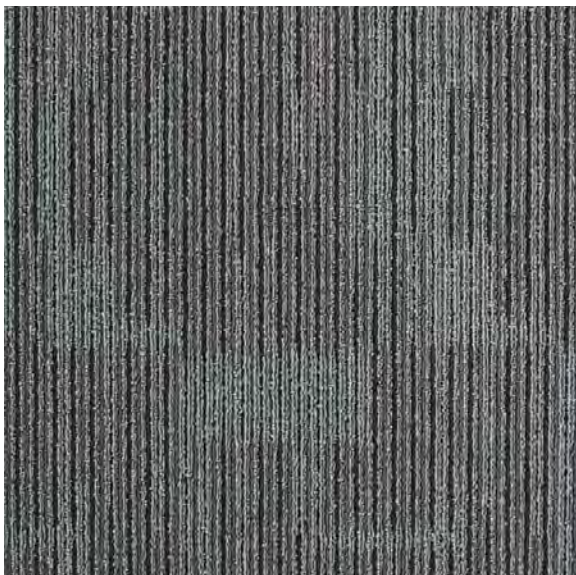
The Nouveau Crescent range caters to the classic commercial colour palette without being too corporate and..well...boring so you can stick to the rules but add your own personal stamp onto your next interior projects too. Whether you're dazzled by a silver Stardust or blown away by Orion's Belt brown, we've got something to suit every need, with an effortlessly stylish linear design to boot.



Milky Way



Moonlight



Stardust



Orion's Belt

Combinations

Nouveau Elements II

Block colours are extremely versatile and can be as subtle or as statement as you like but sometimes, you need something a little more exciting. This design-led range cleverly combines tonal shades in a linear formation to deliver a stylish surface pattern that would be right at home in any modern office or top-notch hotel.

Ever had that super awkward moment of walking into a meeting thinking it's just a free table? Well problem solved. Why not use Nouveau Elements II to zone out different areas? So, pop down Nouveau Crescent to show the meeting tables, and pop Nouveau Endurance down for walkways / other areas.



Want to learn more about it?



[Read our blog](#)

StainSafe®



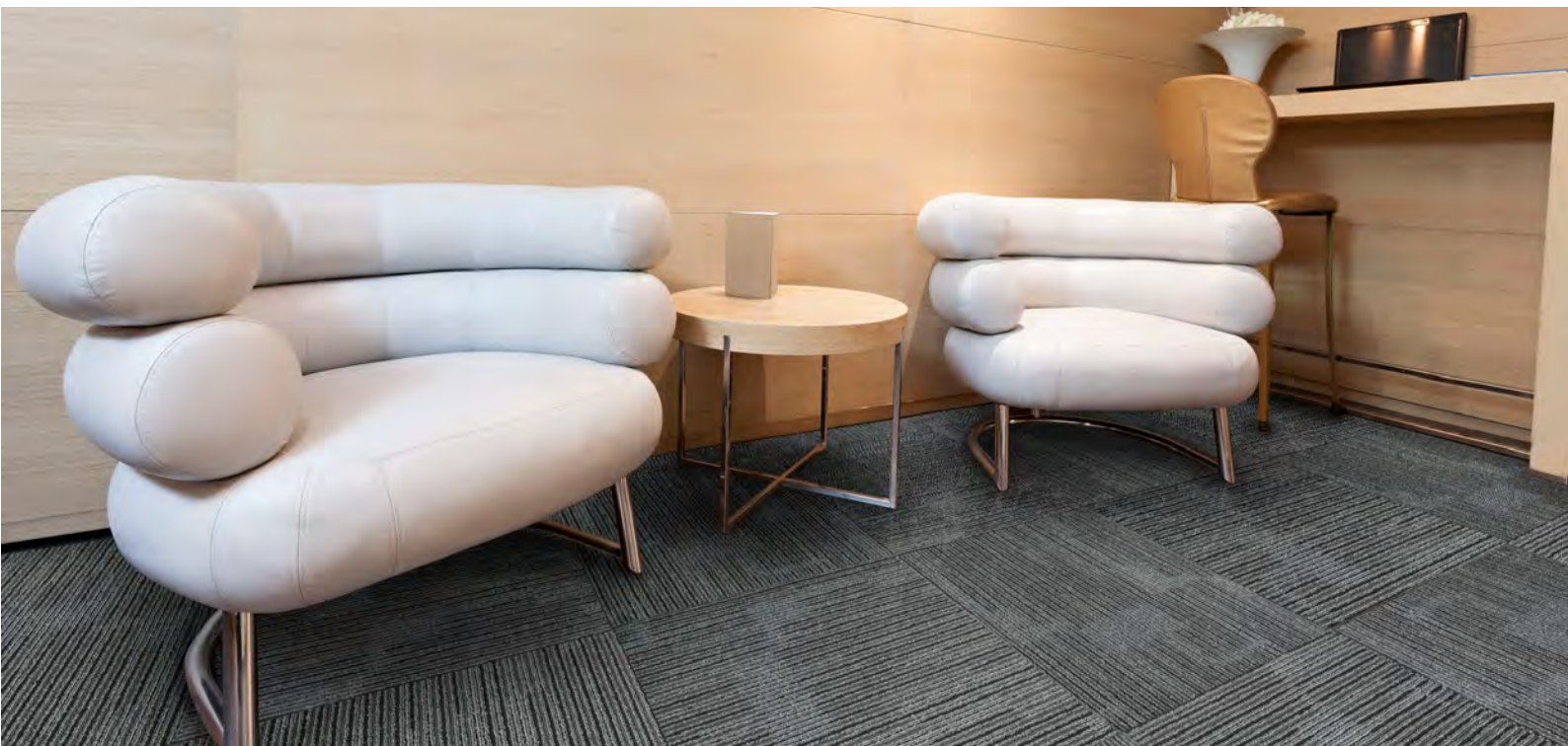
Stainsafe® does not fail to provide complete protection against stains and dirt. These carpet tiles are not treated with any chemicals or coatings. It absorbs no moisture, therefore no dirt or liquid will be absorbed into the fibres. Stainsafe® is only available for 100% Polypropylene carpet tiles. Therefore it will also be incredibly durable, hardwearing and long lasting.

Want to learn more about it?



[Read our blog](#)

Resistant



Built to withstand a never-ending stream of traffic, these ethically-sourced carpet tiles are the ideal solution for busy offices, reception areas and busy public spaces. When purchasing any of our Nouveau ranges, you will also be covered by a guarantee of at least 5 years and our exclusive 365 Returns policy so you can order with upmost confidence.

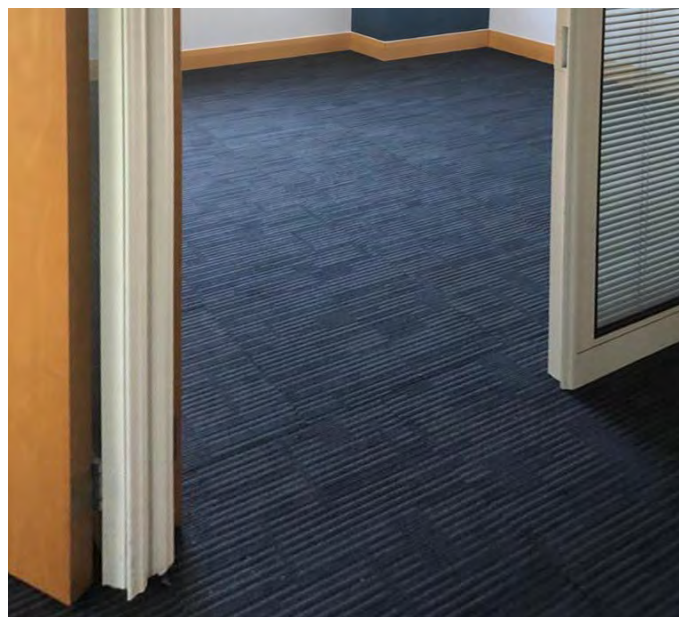
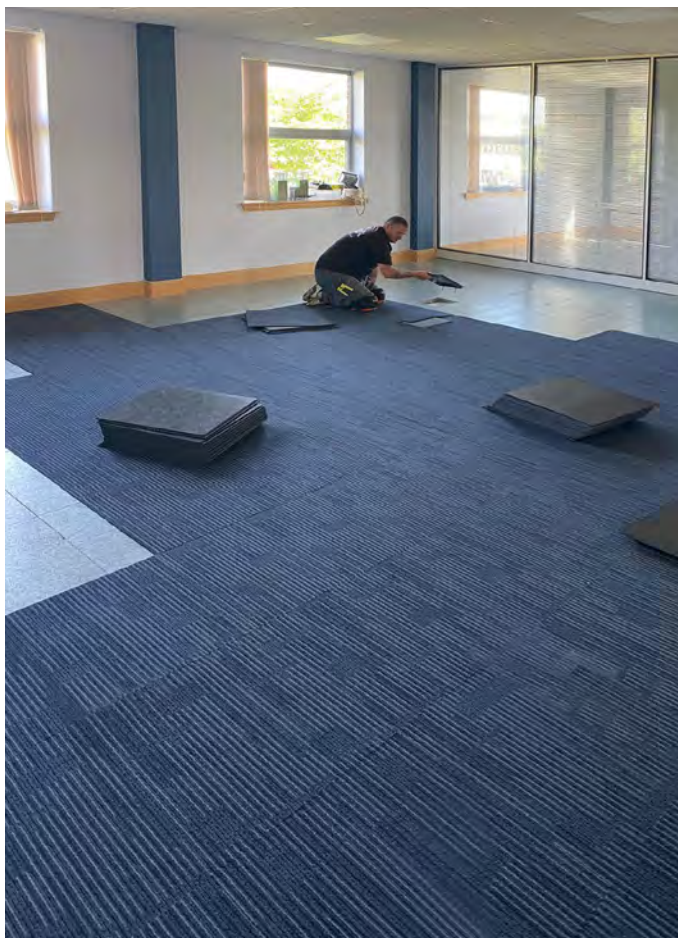
**Affordable and resistant.
Do you want any better than
this?!**

Fitting projects

Whether you need to renovate your home or office, or if you are in charge of renovating a schoolroom or airport, DCTUK is here for you! Our fitting teams will take care of everything so your home or workspace will be ready to show off to lots of envious eyes before you know it.

We want to make our customers' life easier; your satisfaction matters most - we're always available at any time by phone call or email. You can see below a project completed using our very own Nouveau Crescent. Take a look. You won't be disappointed.

Twice2Much, Berkshire



Learn more about our fitting



Watch a youtube video

Fitting for the home

What we do

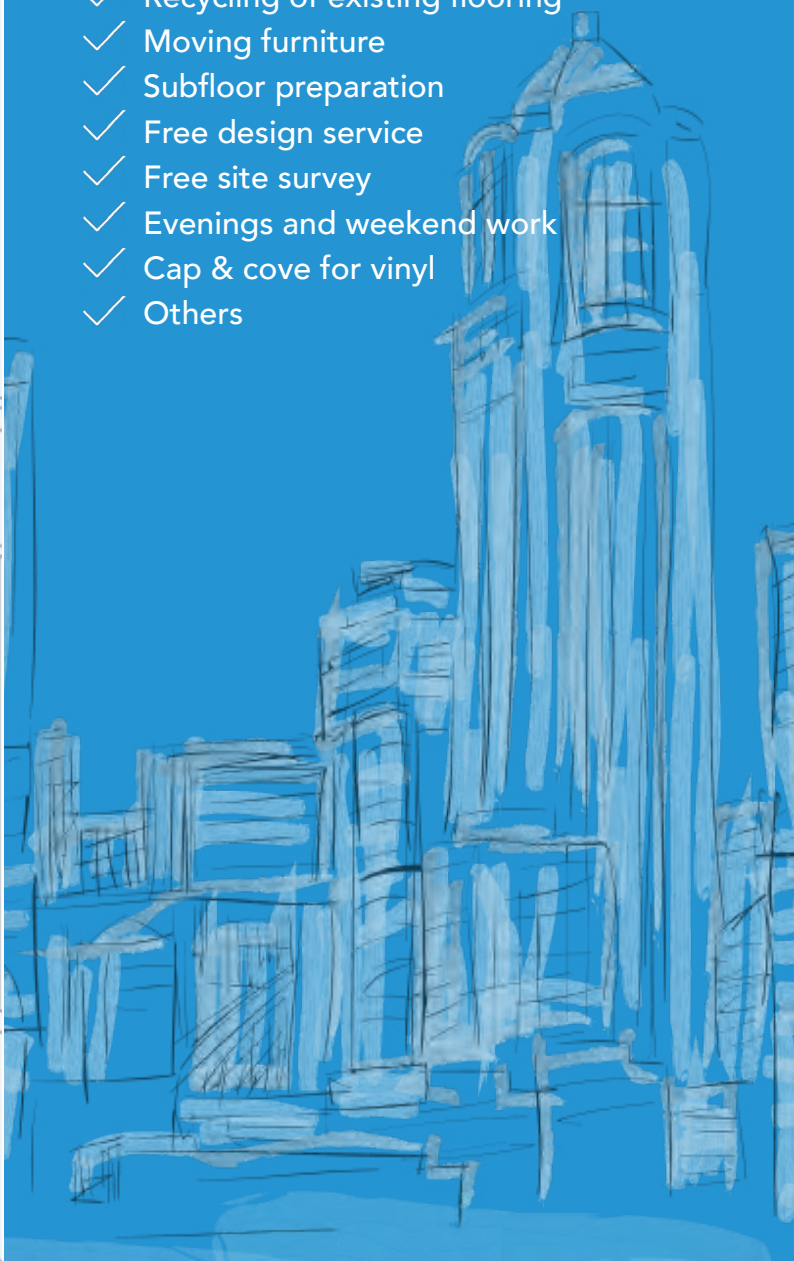
- ✓ Straight lay (all products)
- ✓ Uplift/dispose of existing flooring
- ✓ Recycling of existing flooring
- ✓ Subfloor preparation
- ✓ Evenings & Weekends
- ✓ Cap & cove for vinyl



Fitting for the workplace

What we do

- ✓ Straight lay (all products)
- ✓ Uplift & dispose existing flooring
- ✓ Recycling of existing flooring
- ✓ Moving furniture
- ✓ Subfloor preparation
- ✓ Free design service
- ✓ Free site survey
- ✓ Evenings and weekend work
- ✓ Cap & cove for vinyl
- ✓ Others



Specifications

1/10" loop pile / 1/10" poil bouclé / 1/10" Schlingenpol / 1/10" lussenpool

PILE MATERIAL COMPOSITION DU VELOURS POLMATERIAL POOLMATERIAAL	100% PP Stainsafe®
TOTAL WEIGHT POIDS TOTAL GESAMTGEWICHT TOTAAL GEWICHT	Ca. 4.300g/m ²
PILE WEIGHT POIDS DU VELOURS POLGEWICHT POOLGEWICHT	Ca. 550g/m ²
TOTAL HEIGHT HAUTEUR TOTALE GESAMTHÖHE TOTAAL HOOGTE	Ca. 7mm
PILE HEIGHT HAUTEUR DU VELOURS FLORHÖHE POOLHOOGTE	Ca. 4mm
TUFT DENSITY NOMBRE DE TOUFFES NOPPENZAHL AANTAL NOPPEN	Ca. 212.760/m ²
FIRE RESISTANCE COMPOTEMENT AU FEU BRENNVERHALTEN BRANDGEDRAG	Cfl-s] (EN 13501 – 1) Centexbel 0493-CPR-

FASTNESS TO LIGHT
SOLIDITÉ À LA LUMIÈRE
LICHTECHTHEIT
LICHTECHTHEID

5-6

COLOUR FASTNESS TO WATER
SOLIDITÉ À L'EAU
WASSERECHTHEIT
WATERECHTHEID

4-5

SOUND ABSORPTION
ABSORPTION PHONIQUE
SCHALLABSORPTIONSGRAD
GELUIDSABSORPTIE

22 dB

PERMANENTLY ANTISTATIC
ANTISTATIC PERMANENT
PERMANENT ANTISTATISCH
PERMANENT ANTISTATISCH

< 2kV

SIZE
DIMENSIONS
ABMESSUNG
AFMETINGEN

50 x 50cm

PACKAGING
EMBALLAGE
VERPACKUNG
VERPAKKING

5m²





Social Media

 facebook.com/dctuk

 instagram.com/dctukdesign

 youtube.com/dctuk

 twitter.com/dctuk

0345 222 1544
www.dctuk.com