

# Nouveau Connections



0345 222 1544  
[www.dctuk.com](http://www.dctuk.com)

## Table of content



**03**

**Product features**

**04**

**The colours**

**05**

**Combinations**

**06**

**StainSafe®**

**07**

**Affordable and  
environmentally Friendly**

**08**

**Fitting Projects**

**10**

**Specifications**

# Product features

✓ 50cm x 50cm carpet tiles

✓ Made with StainSafe -  
easy to clean

✓ Perfect for home and  
office

✓ Anti-static properties

✓ Low level loop pile

✓ Made in the EU in a  
100% green factory

✓ Delivered next working  
day

✓ 12 Available Colours



# The colours

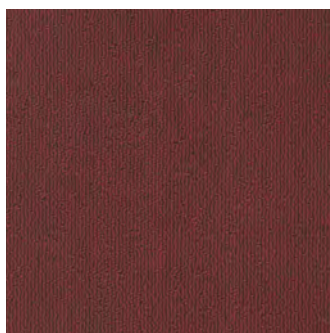
Featuring our lowest price carpet tiles, the Nouveau Connections range is the perfect way to transform your workplace or home without breaking the bank. These amazing carpet tiles are available in 12 different colourways and can be ordered in any quantity!



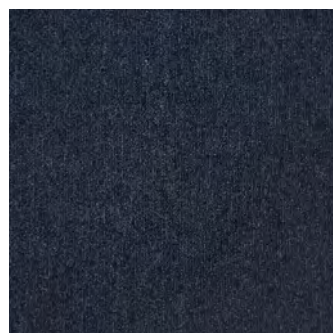
**Black**



**Brown**



**Crimson**



**Deep Blue**



**Graphite**



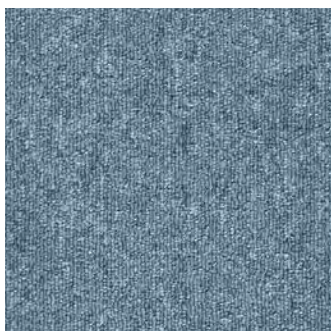
**Pebble**



**Sand**



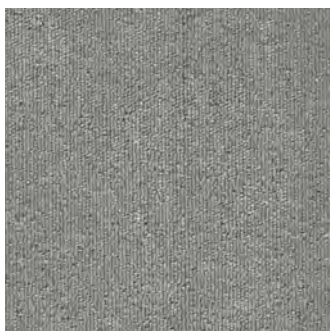
**Sea Blue**



**Sky Blue**



**Smoke Grey**



**Soft Grey**



**Stone Grey**

# Combinations

## Nouveau Connections Stripe

The twin sister to our incredible popular range Nouveau Connections, this amazing Nouveau Connections Stripe collection uses exactly the same yarn bank to create these fab linear designs for your home or workplace.

Combine with the Connections range to create unique looks that will turn this affordable yet beautiful carpet tile into something that looks a lot more expensive.

Ever had that super awkward moment of walking into a meeting thinking it's just a free table? Well problem solved. Why not use the Nouveau Connections Stripe to zone out different areas? So, pop down the stripe to show the meeting tables, and pop the Nouveau Connections down for walkways / other areas.



**Want to learn more about it?**



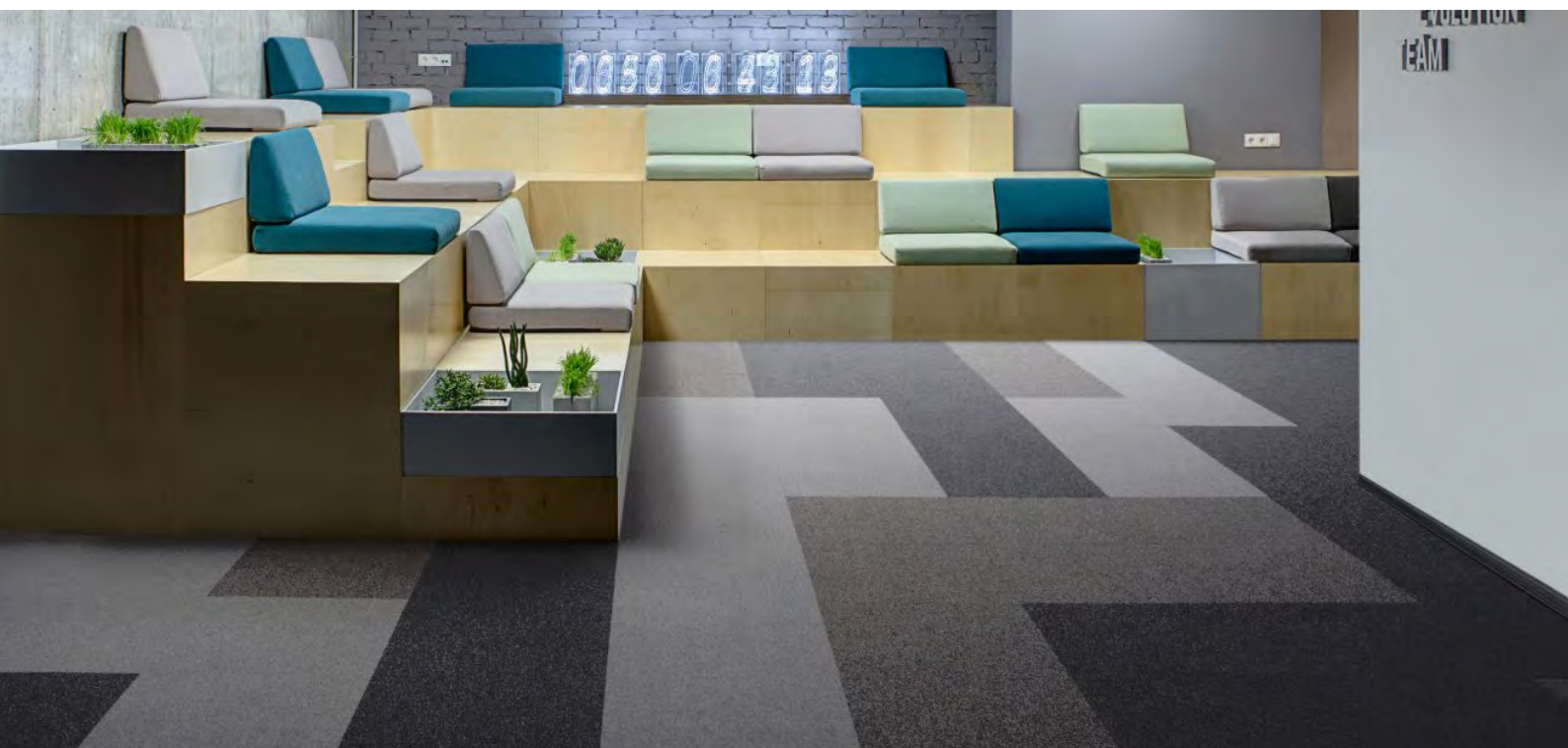
[Read our blog](#)



[Watch a youtube video](#)



# StainSafe®



Stainsafe® does not fail to provide complete protection against stains and dirt. These carpet tiles are not treated with any chemicals or coatings. It absorbs no moisture, therefore no dirt or liquid will be absorbed into the fibres. Stainsafe® is only available for 100% Polypropylene carpet tiles. Therefore it will also be incredibly durable, hardwearing and long lasting.

**Want to learn more about it?**



[Read our blog](#)

# Affordable and environmentally friendly



Nouveau Connections are beautiful and affordable carpet tiles made in a 100% green factory in the European Union. This means it is ethically sourced. Besides, it is also 100% recyclable. If one day you decide you want to change the look of your space again, you can give them the chance to have a whole new different life.

**Affordable, ethically sourced and 100% recyclable. Do want any better than this?!**

# Fitting projects

Whether you need to renovate your home or office, or if you are in charge of renovating a schoolroom or airport, DCTUK is here for you! Our fitting teams will take care of everything so your home or workspace will be ready to show off to lots of envious eyes before you know it.

We want to make our customers' life easier; your satisfaction matters most - we're always available at any time by phone call or email. You can see below some projects completed using our very own Nouveau Connections Stripe. Take a look. You won't be disappointed.

## Manchester Airport



Learn more about this project



[Visit our page](#)

[Watch a youtube video](#)



# Fitting for the home

## What we do

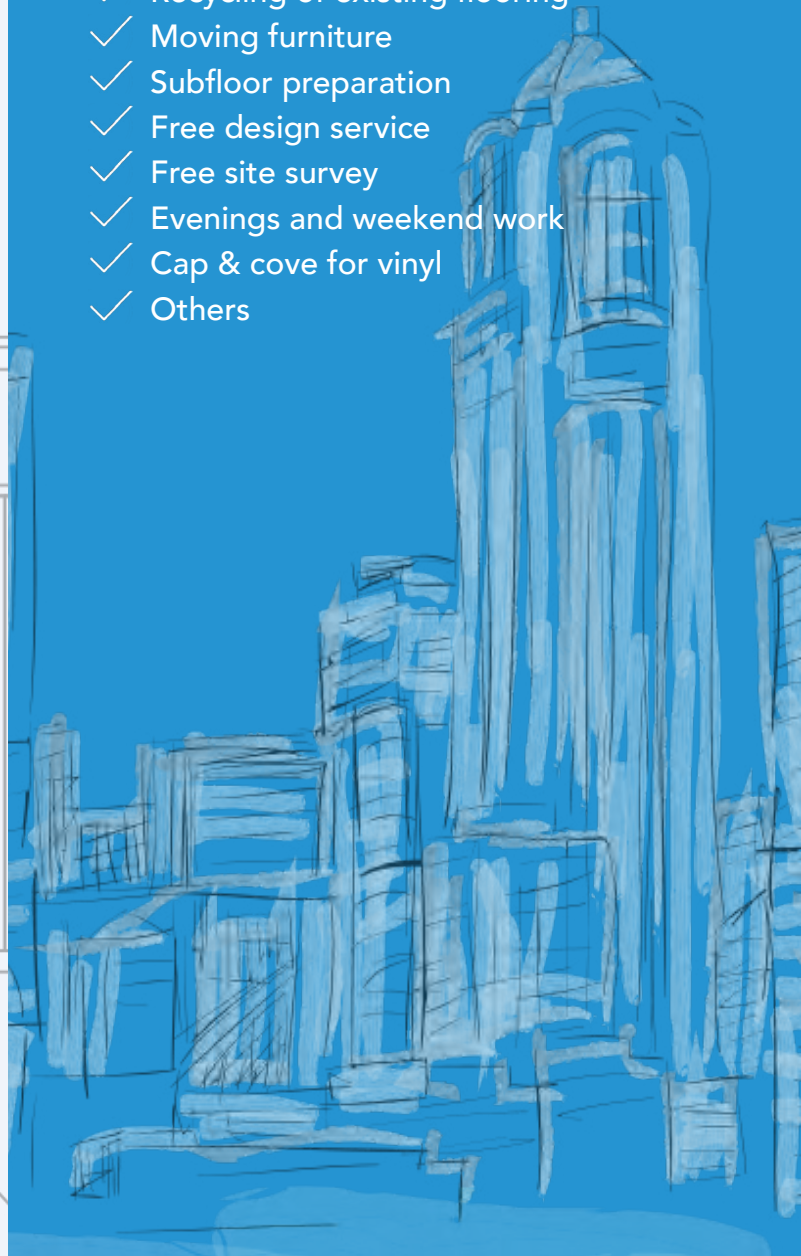
- ✓ Straight lay (all products)
- ✓ Uplift/dispose of existing flooring
- ✓ Recycling of existing flooring
- ✓ Subfloor preparation
- ✓ Evenings & Weekends
- ✓ Cap & cove for vinyl



# Fitting for the workplace

## What we do

- ✓ Straight lay (all products)
- ✓ Uplift & dispose existing flooring
- ✓ Recycling of existing flooring
- ✓ Moving furniture
- ✓ Subfloor preparation
- ✓ Free design service
- ✓ Free site survey
- ✓ Evenings and weekend work
- ✓ Cap & cove for vinyl
- ✓ Others



# Specifications

1/10" loop pile / 1/10" poil bouclé / 1/10" Schlingenpol / 1/10" lussenpool

PILE CONTENT COMPOSITION DU VELOURS POLMATERIAL POOLSAMENSTELLING	100% PP Stainsafe®
PILE WEIGHT POIDS DU VELOURS POLGEWICHT POOLGEWICHT	Ca. 360 g/m <sup>2</sup>
TOTAL WEIGHT POIDS TOTAL GESAMTGEWICHT TOTAAL GEWICHT	Ca. 3.725 g/m <sup>2</sup>
PILE HEIGHT HAUTEUR DU VELOURS FLORHÖHE POOLHOOGTE	Ca. 2,8 mm
TOTAL HEIGHT HAUTEUR TOTALE GESAMTHÖHE TOTALE HOOGTE	Ca. 5,7 mm
TUFT DENSITY NOMBRE DE TOUFFES NOPPENZAHL AANTAL NOPPEN	Ca. 149.600/m <sup>2</sup>

05/20 All rights reserved to alter technical specifications - Warranty conditions, see [www.stain-safe.com](http://www.stain-safe.com)  
Sous réserve de modifications techniques - conditions de garantie, voir [www.stain-safe.com](http://www.stain-safe.com)  
Unter Vorbehalt technischer Änderungen - Garantiebedingungen siehe [www.stain-safe.com](http://www.stain-safe.com)  
Onder voorbehoud van wijzigingen van technische specificaties - garantievoorwaarden: [www.stain-safe.com](http://www.stain-safe.com)

SIZE DIMENSIONS ABMESSUNG AFMETINGEN	50 x 50 cm
PACKAGING EMBALLAGE VERPACKUNG VERPAKKING	5 m <sup>2</sup>
ANTISTATIQUE ANTISTATIQUE ANTISTATISCH ANTISTATISCH	< 2 kV
FIRE CLASS CLASSEMENT FEU BRANDVERHALTENSKLASSE BRANDKLASSE	Cfl-s] (EN 13501-1)
FASTNESS TO LIGHT SOLIDITÉ À LA LUMIÈRE LICHTECHTHEIT LICHTECHTHEID	5-6
WATER FASTNESS SOLIDITÉ À L'EAU WASSERECHEIT WATERECHTHEID	4-5







#### Social Media

 [facebook.com/dctuk](https://facebook.com/dctuk)

 [instagram.com/dctukdesign](https://instagram.com/dctukdesign)

 [youtube.com/dctuk](https://youtube.com/dctuk)

 [twitter.com/dctuk](https://twitter.com/dctuk)

**0345 222 1544**  
**[www.dctuk.com](http://www.dctuk.com)**